

**Mission statements & Design Goals**

The Project is to develop a prefabricated modular community health center that can provide mental and physical health care service to workers who have heavy works stress. The goal of the project is to create a therapeutic, comfortable and restful environment that can help workers to relax after a long day work.

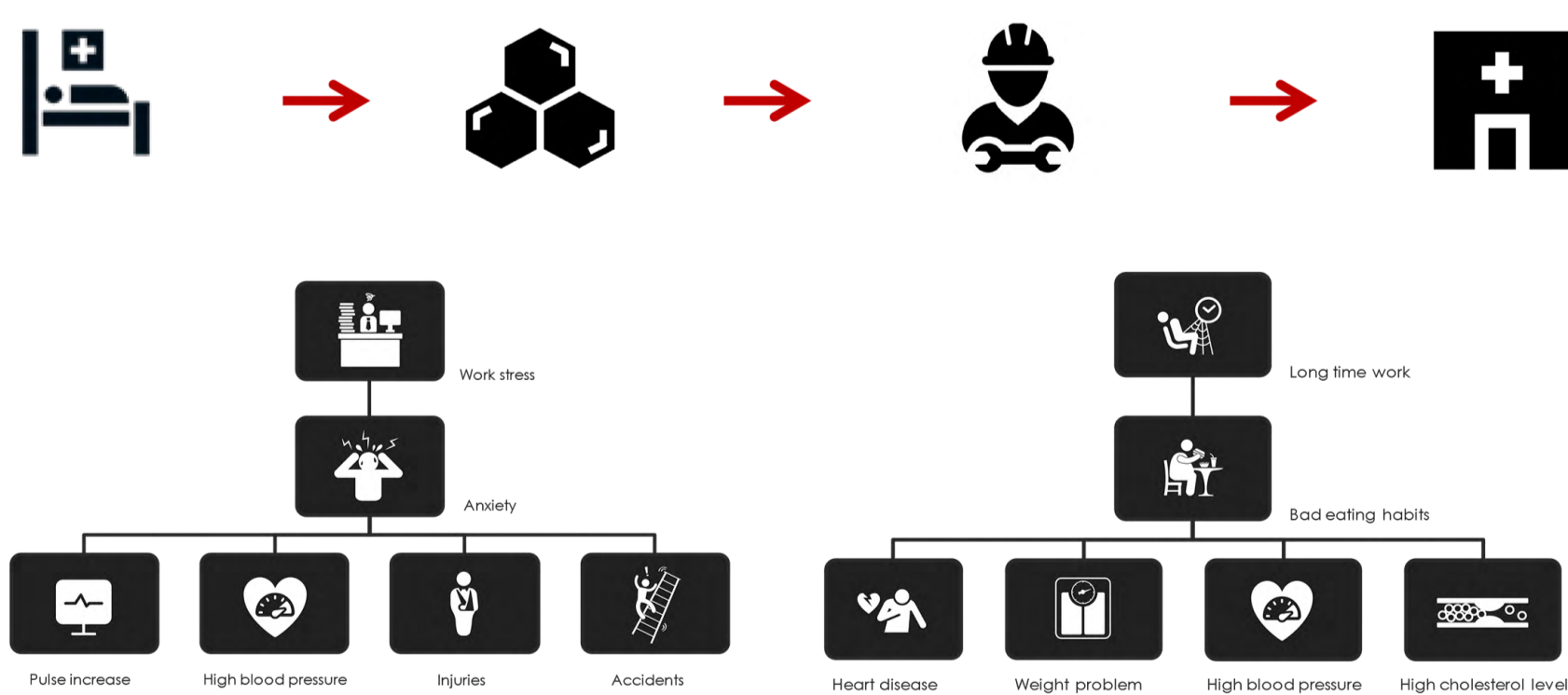
**Location**

Jurong was largely industrialized in the early 1960s in a response to the general economic situation of post-war Singapore. The heavy redevelopment of the region paved the way for the opening of a large-scale industrial sector in the country, which was unprecedented at that time. Today, the rapid growth and much development of Jurong has turned the city into one of the most densely-populated industrial areas in the country.



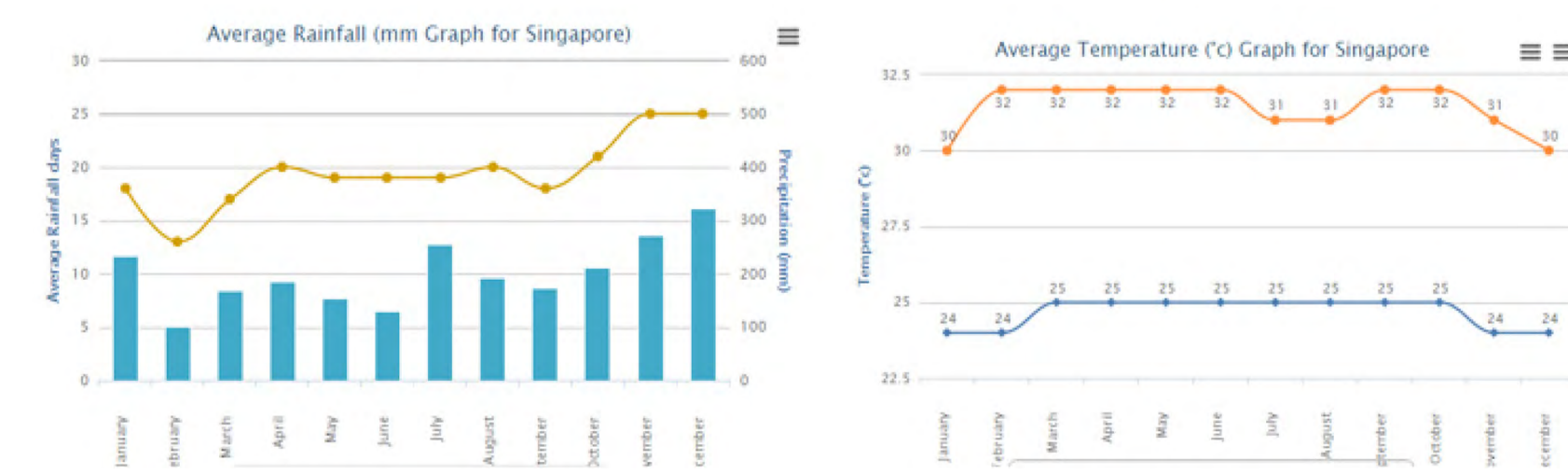
**Target population**

Blue-collar & white-collar workers that are the major population in this area. A recent study on office workers in Singapore shows that the body parts with the highest report of pain were neck (46%), shoulder (42%) and low back (42%), which are in great needs of care and rehabilitation.



**Climate**

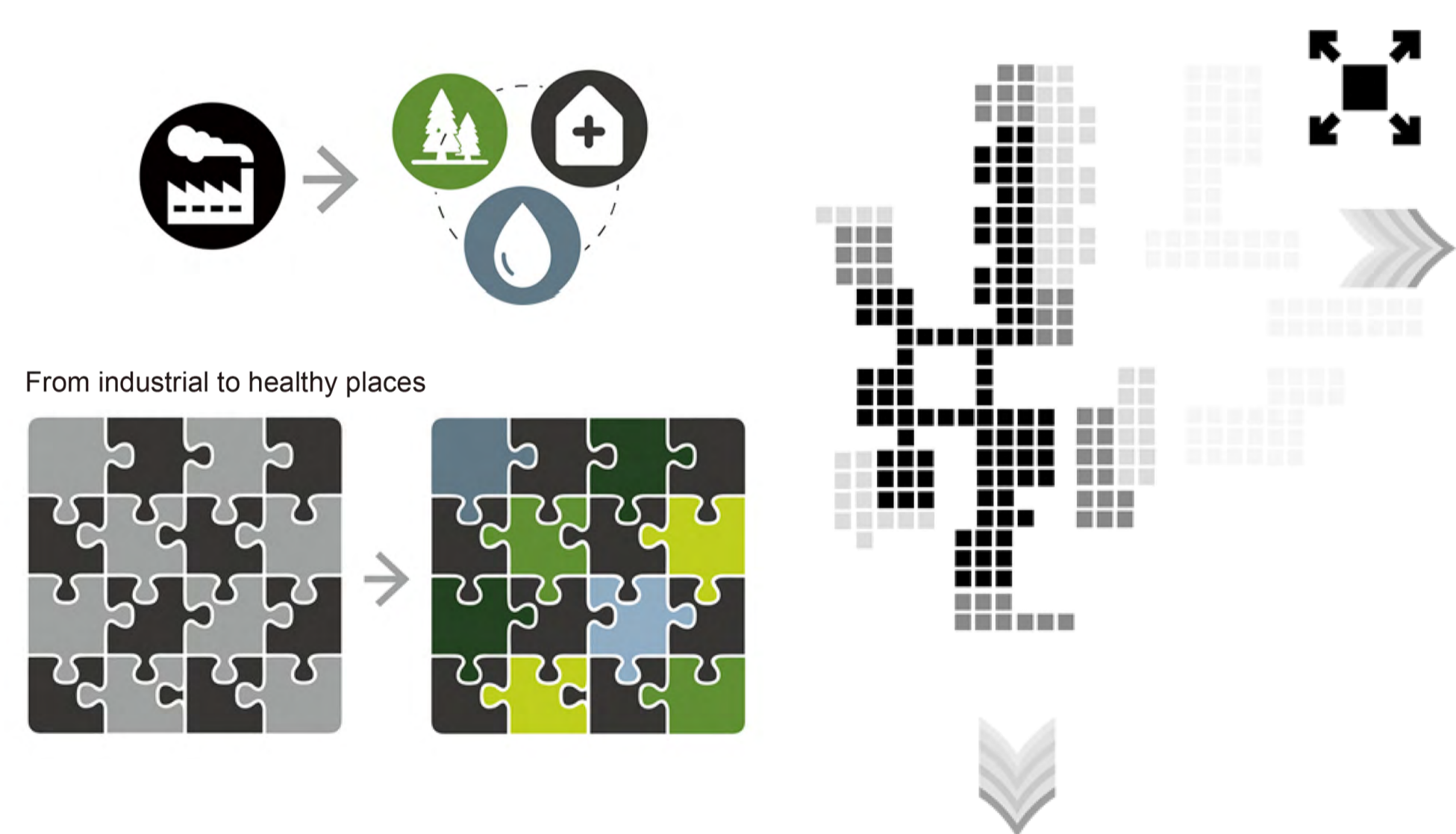
Singapore has a hot and humid climate. Located just 1 degree north of the equator, it is in the tropical climate zone. The weather is warm and humid all year round.



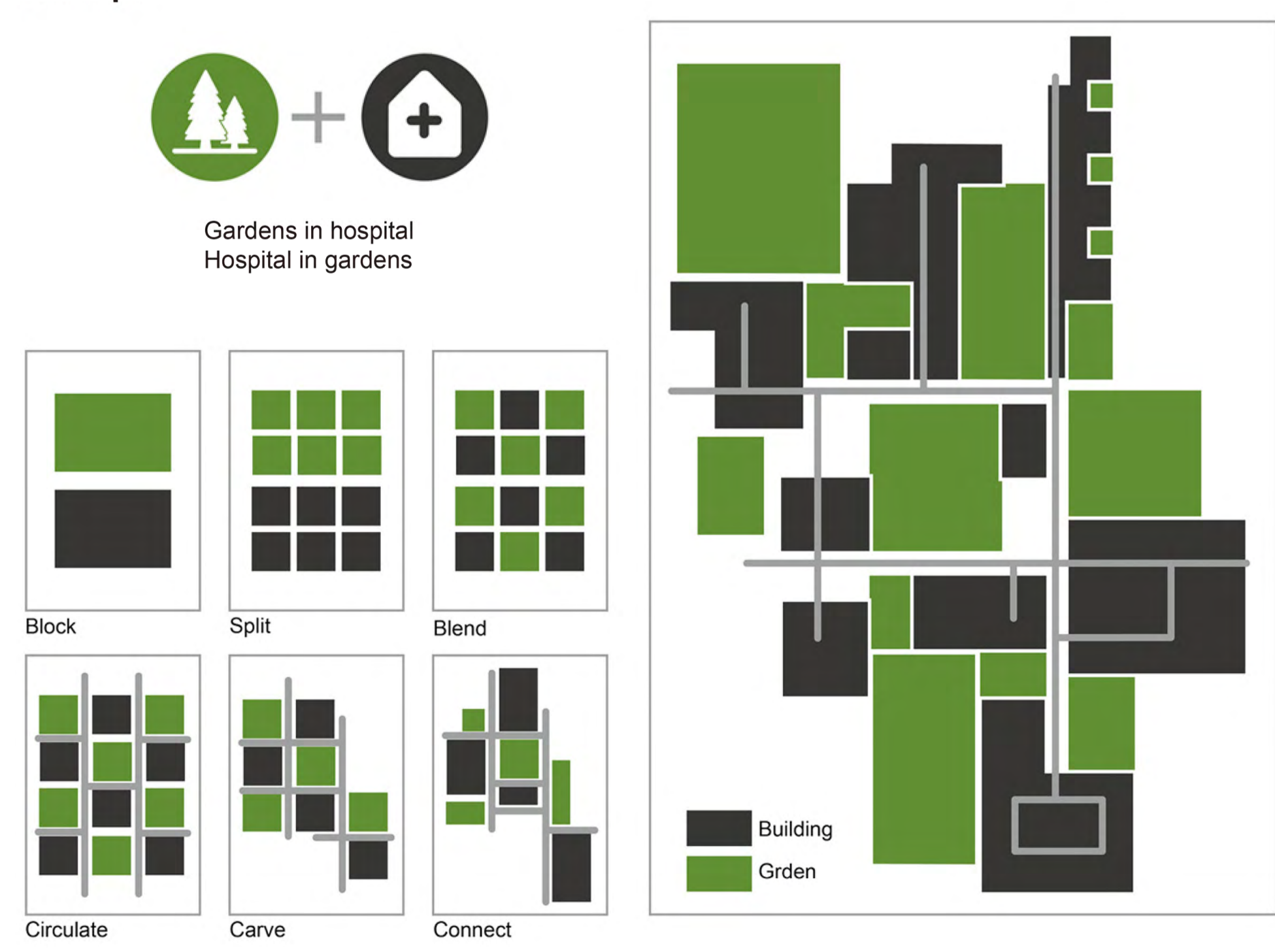
**Design Problem**

- Lack of healthcare and rehabilitation facilities for workers
- Lack of public recreational spaces
- Mono land use (industrial)
- Workers with high stress levels

**Strategies**

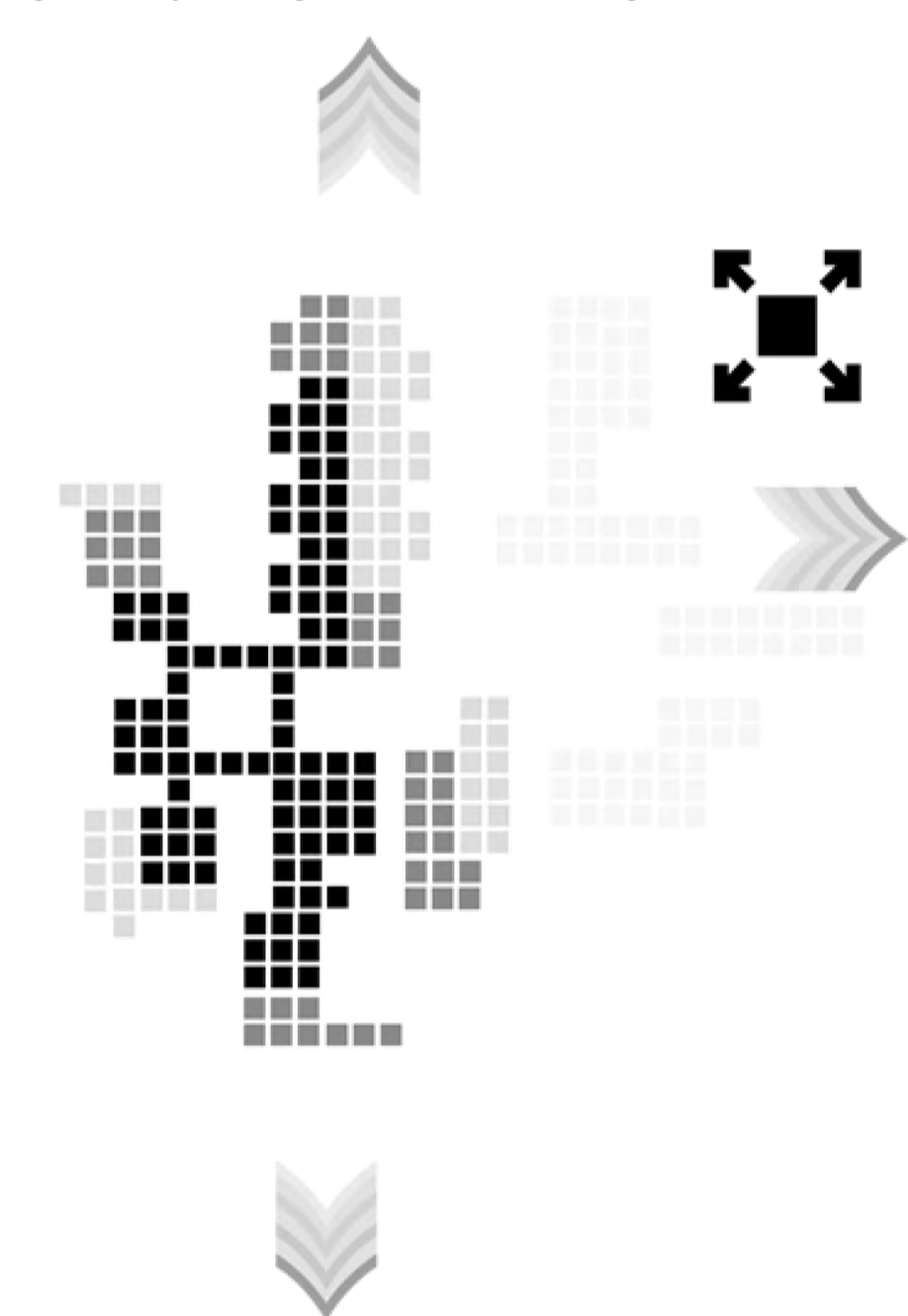


**Concept**



**Future Development**

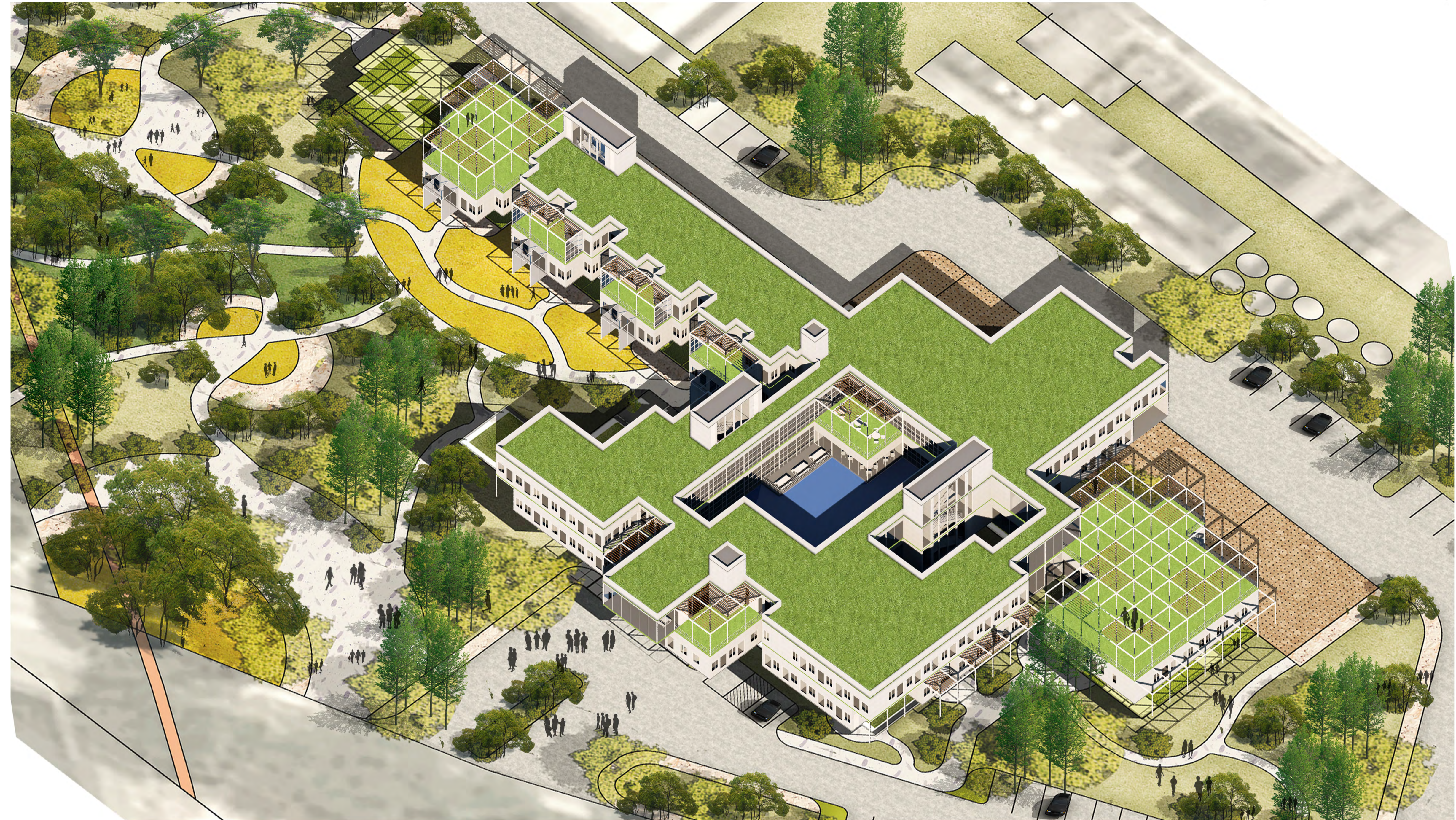
Three distinct axes provide possibilities for future growth by adding modular units along the axes



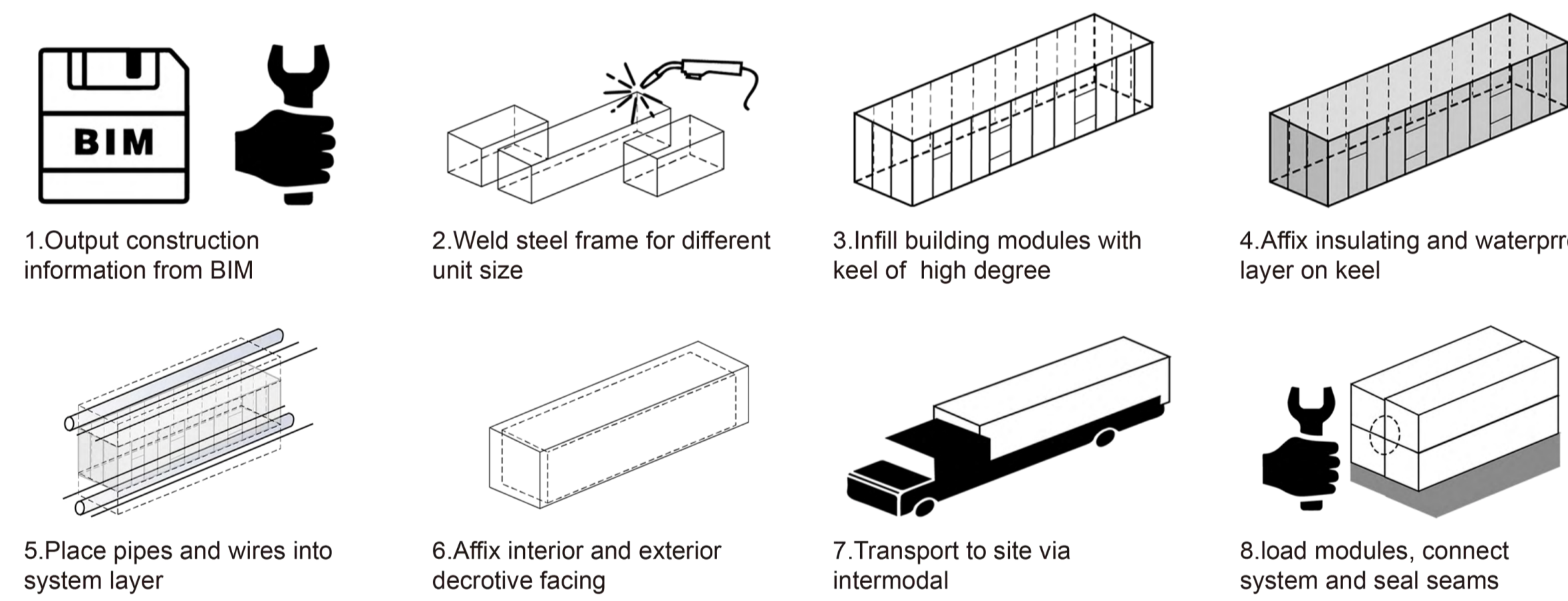
# Gardens in Hospital & Hospital in Gardens

A Prefabricated Modular Community Health Centre for Jruong Industrial Community

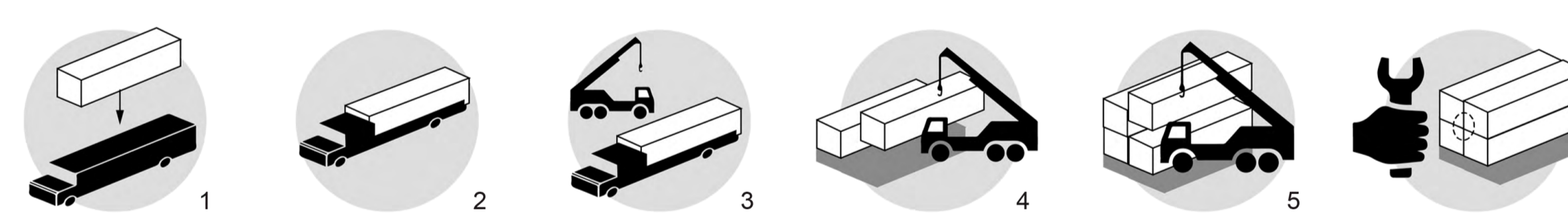
**Bird View**



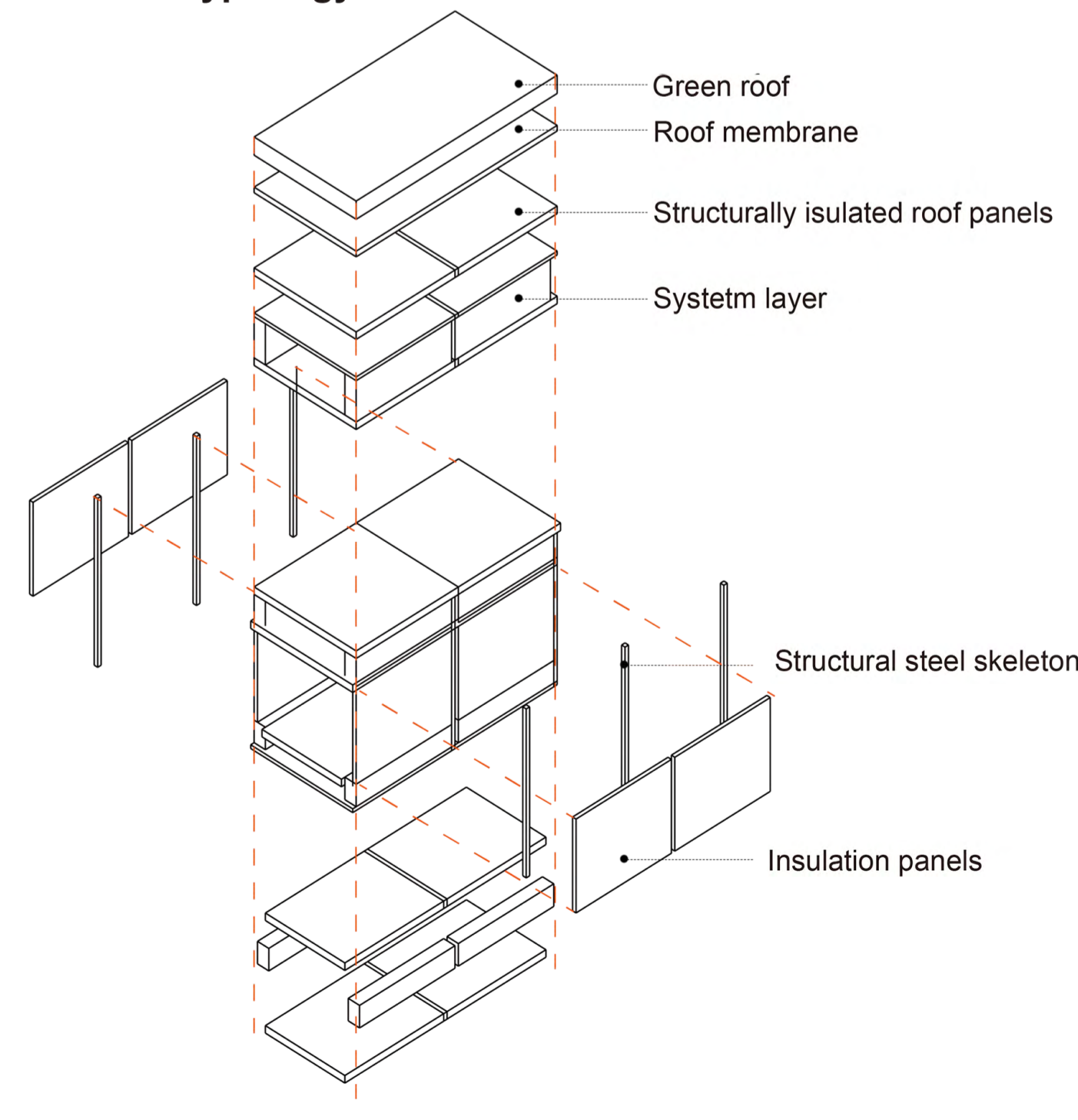
**Modular Unit Construction**



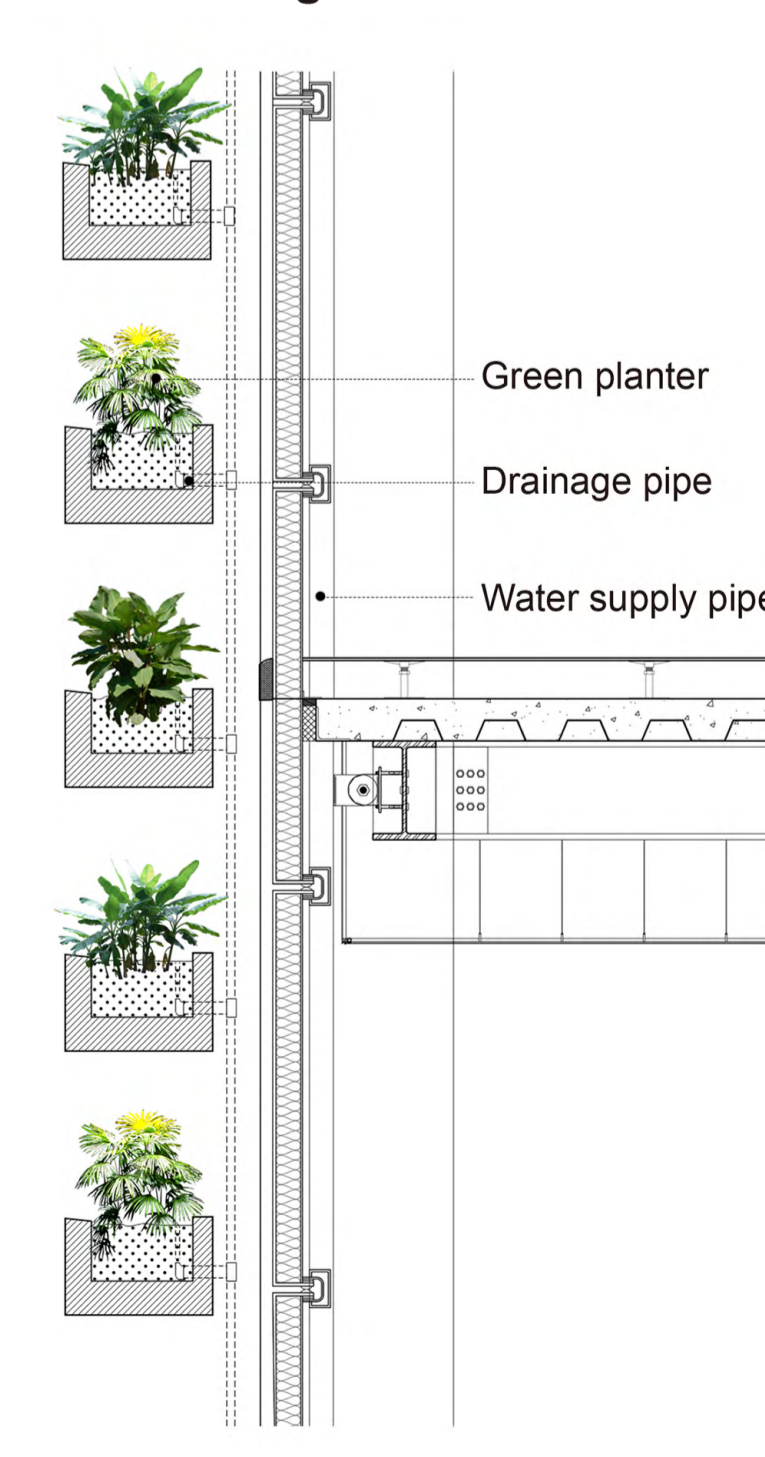
**Site Delivery**



**Modular Typology**



**Vertical Planting Details**



**Lobby View**

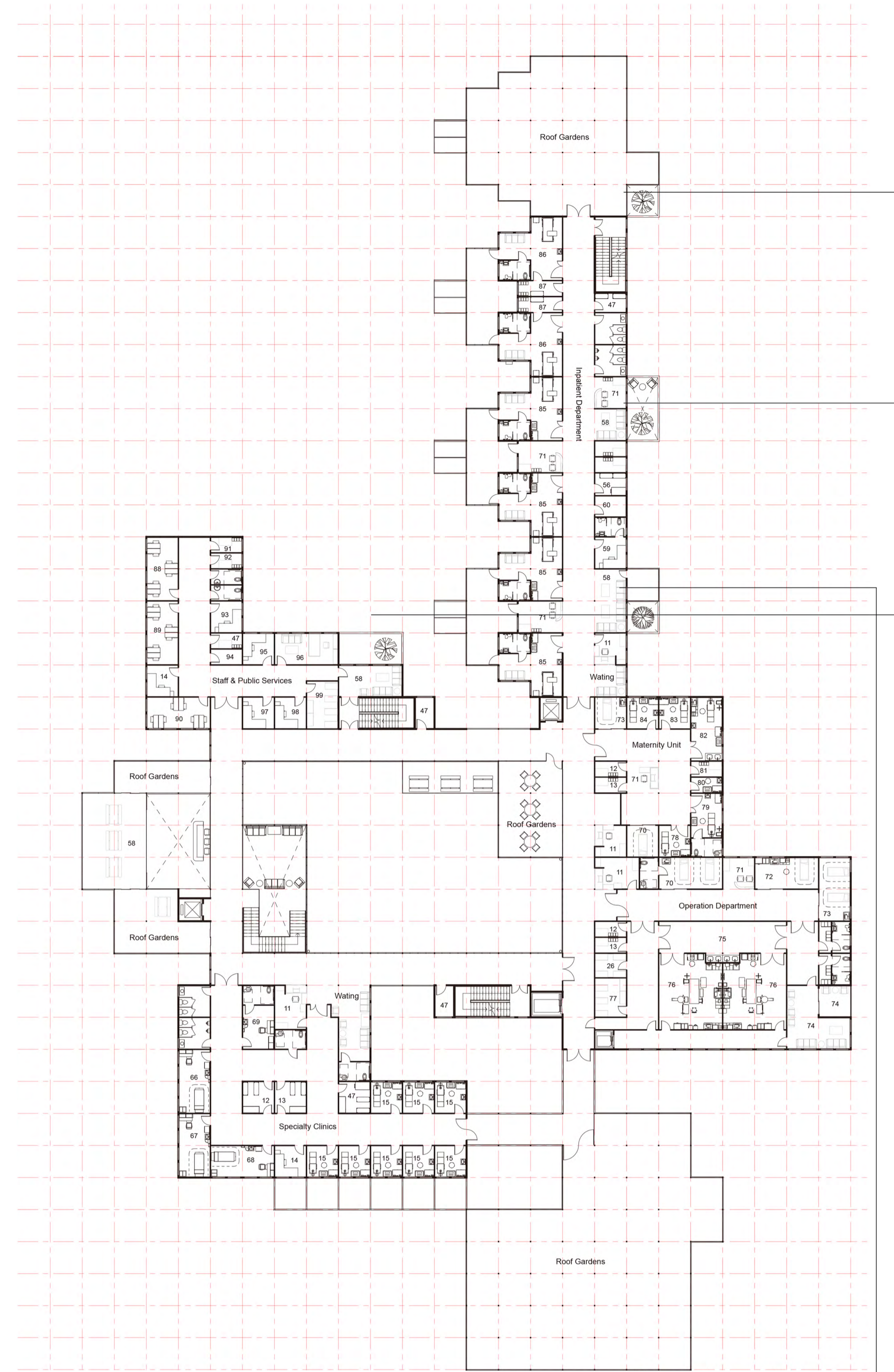
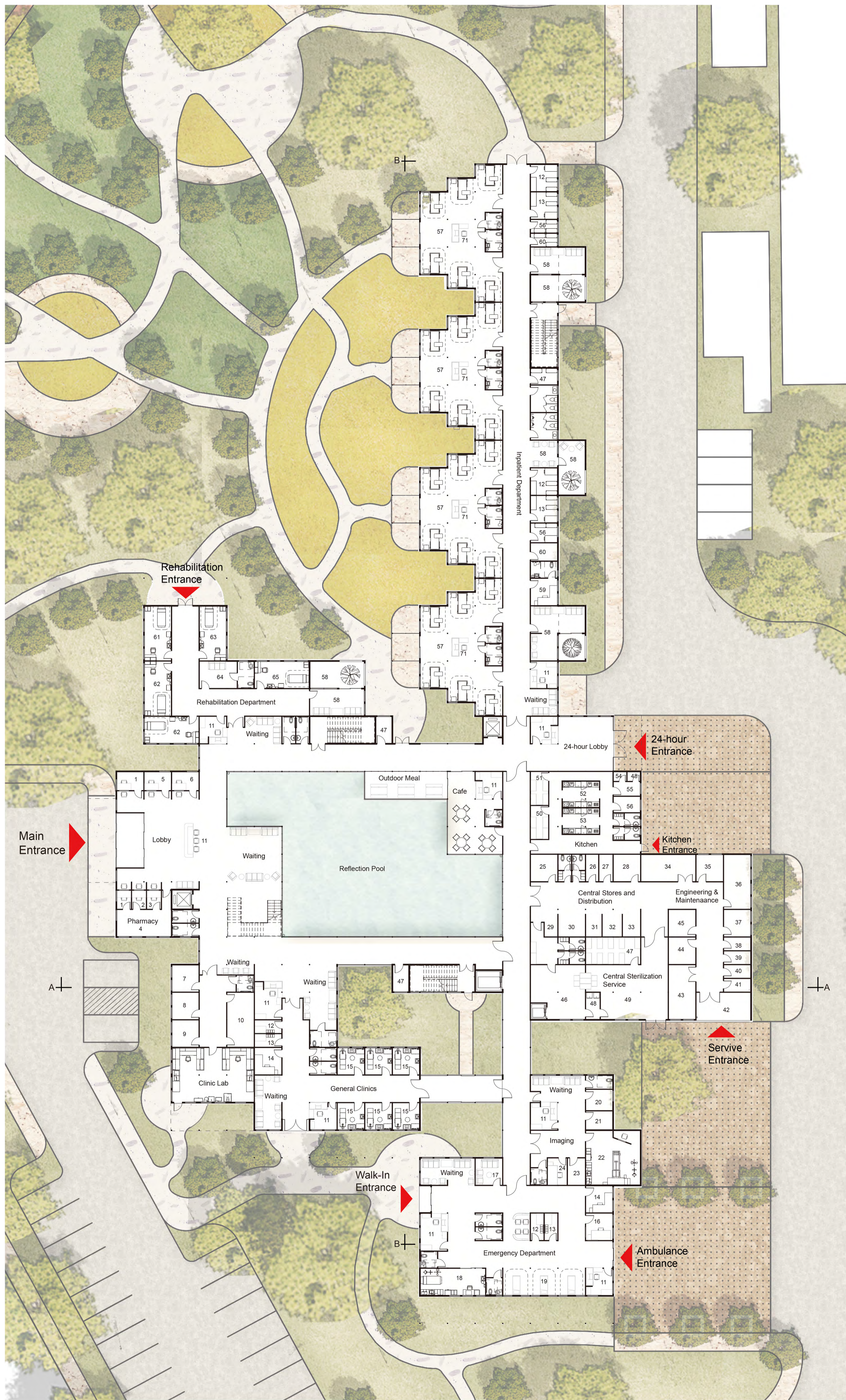


**Thearapeutic gardens for inpatient rooms**

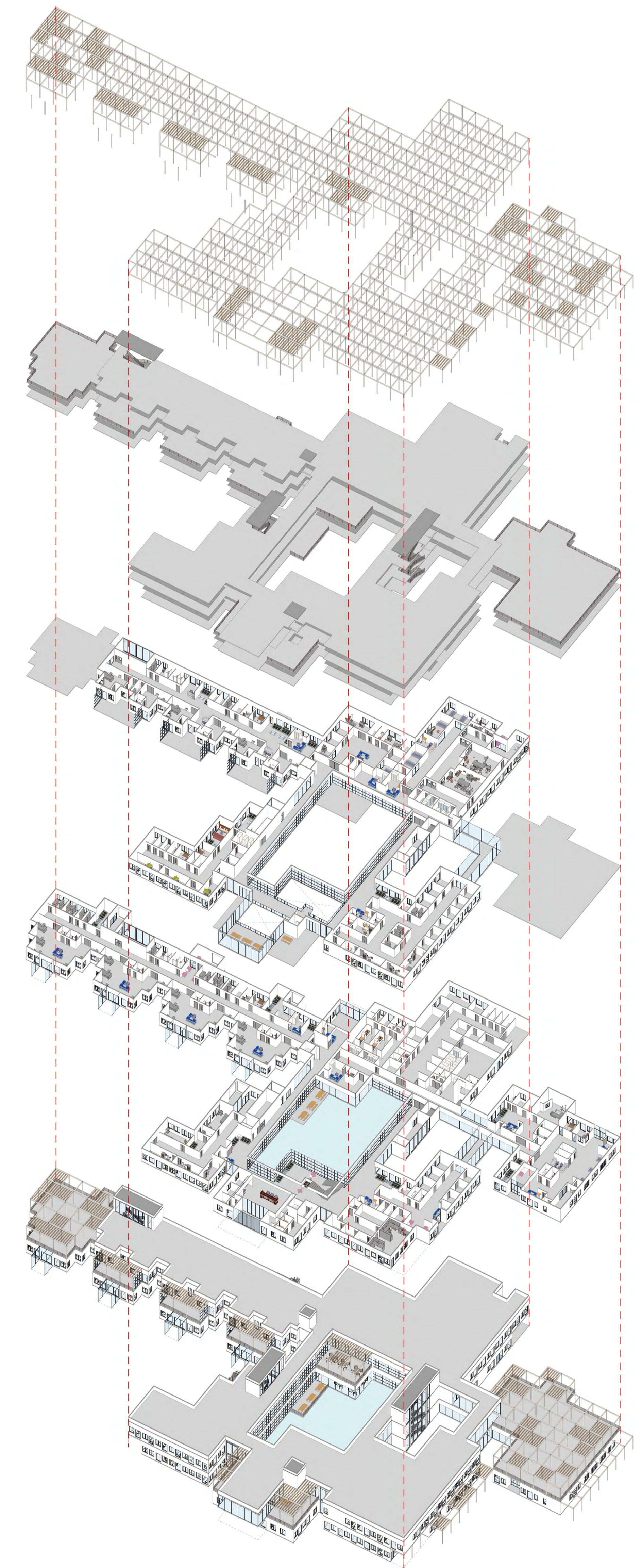
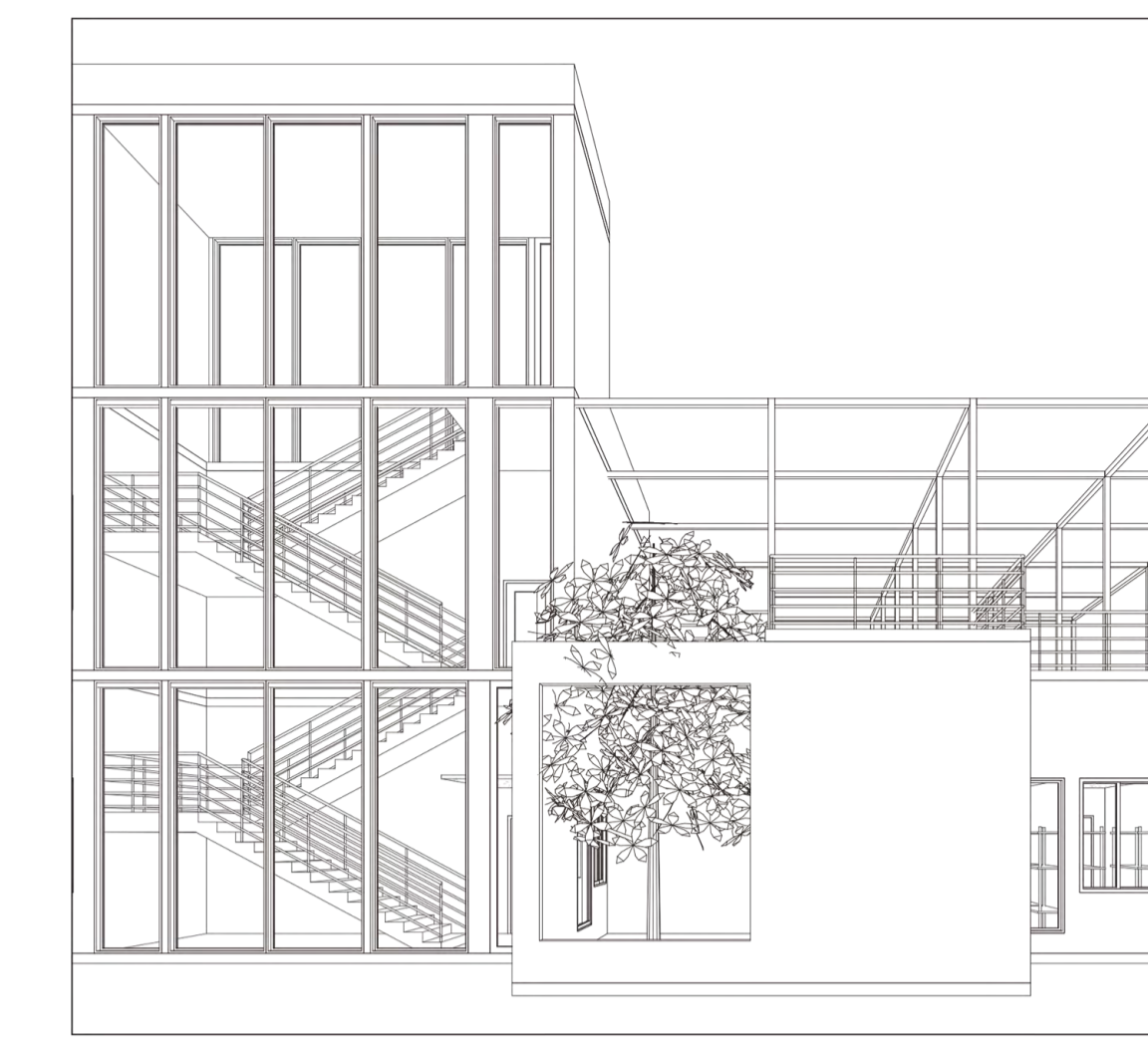


# Gardens in Hospital & Hospital in Gardens

A Prefabricated Modular Community Health Centre for Jruong Industrial Community

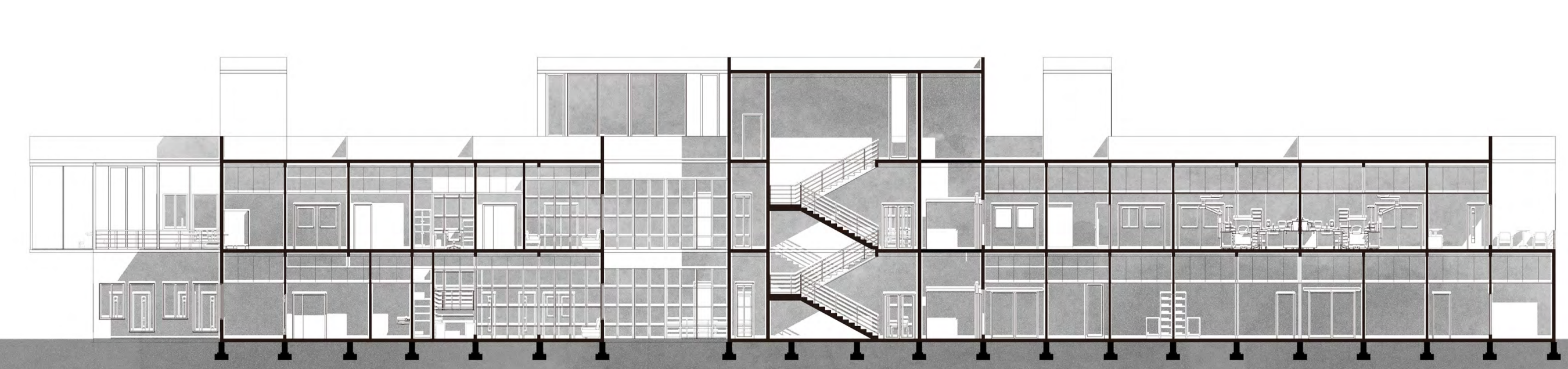


- 1: Cashiers
- 2: Prescription Reciving
- 3: Consultation
- 4: Storage and Dispensing
- 5: Admitting
- 6: Registration
- 7: Injection Room
- 8: Cold Chain
- 9: Logistics Room
- 10: Collection Room
- 11: Reception
- 12: Soiled Utility
- 13: Clean Supply
- 14: Office
- 15: Exam/ Consult
- 16: Security
- 17: Family Room
- 18: Casuality Room
- 19: Stretcher Cubicles
- 20: Holding
- 21: Changing
- 22: Radiography
- 23: Dark Room
- 24: Reading
- 25: Lounge
- 26: House Keeping
- 27: Cart Holding
- 28: New linen storage
- 29: Soiled linen Receive
- 30: Sorted linen sort & wash
- 31: Drying Area
- 32: Clean Linen Sort & Storage
- 33: Assembly & Distribution
- 34: Mortuary
- 35: Repair shop
- 36: General shop
- 37: Equip Storage
- 38: Biomedical Waste
- 39: Flammable Stores
- 40: Gas Manifold
- 41: Gas Storage
- 42: Receiving Docks
- 43: Bulk Stores Non-mec
- 44: Bulk Med
- 45: Receiving&storage
- 46: Decontaminate
- 47: Storage
- 48: Cart Washer
- 49: Pre/Pack
- 50: Dry Storage
- 51: Refrige
- 52: Tray Assembly
- 53: Meal Preparation
- 54: Garbage Holding
- 55: Dishwash Room
- 56: Housekeeping Closet
- 57: 6-Bed Ward
- 58: Stress Relief Space
- 59: Doctor's Room
- 60: Wheelchair Storage
- 61: Acupuncture
- 62: Rehabilitate
- 63: Cupping
- 64: Dressing
- 65: Massage
- 66: Treatment
- 67: Refraction
- 68: AYUSH
- 69: Ultrasound
- 70: Patients Preparation
- 71: Nurse Station
- 72: Anaesthesia
- 73: Recovery
- 74: Lounge
- 75: Clean Corridor
- 76: Operation Room
- 77: Sterile Storage
- 78: Consult
- 79: Labour
- 80: Resuscitation
- 81: Sub-sterile
- 82: Delivery
- 83: Incubator
- 84: Incubator Isolation
- 85: Private Room
- 86: Isolation Room
- 87: Vestibule Sink
- 88: Public Health Supervisor
- 89: Medical Superinten-dant
- 90: Public Health Nurse
- 91: Record Assbly
- 92: Record Control
- 93: Workroom
- 94: Photo-Copy
- 95: Digitizing Room
- 96: Director
- 97: Server Room
- 98: Control room
- 99: Record Storage

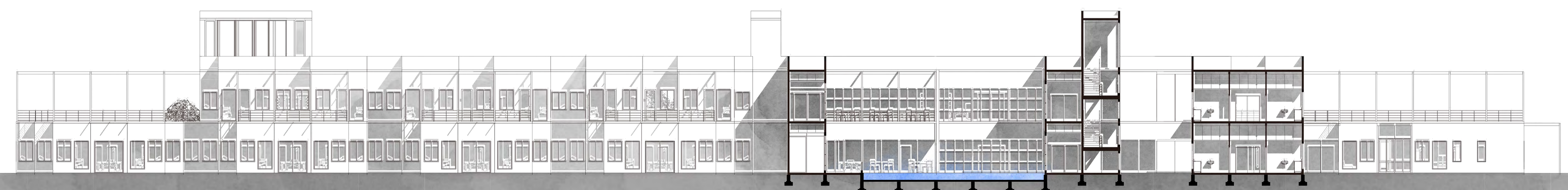


Space for stress relief

Modular Grids & Units & Arrangement Spaces



Section B-B



Section B-B