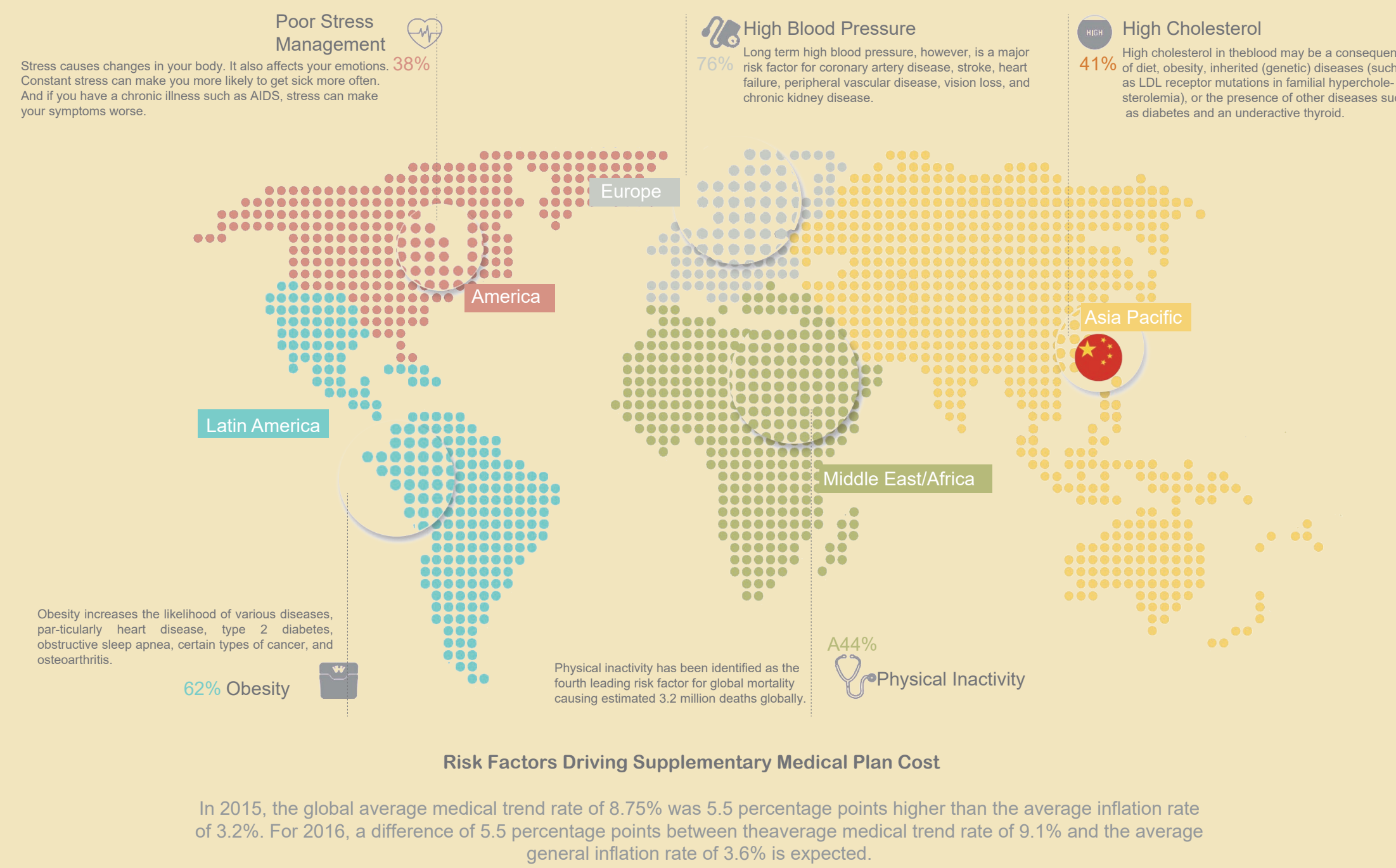
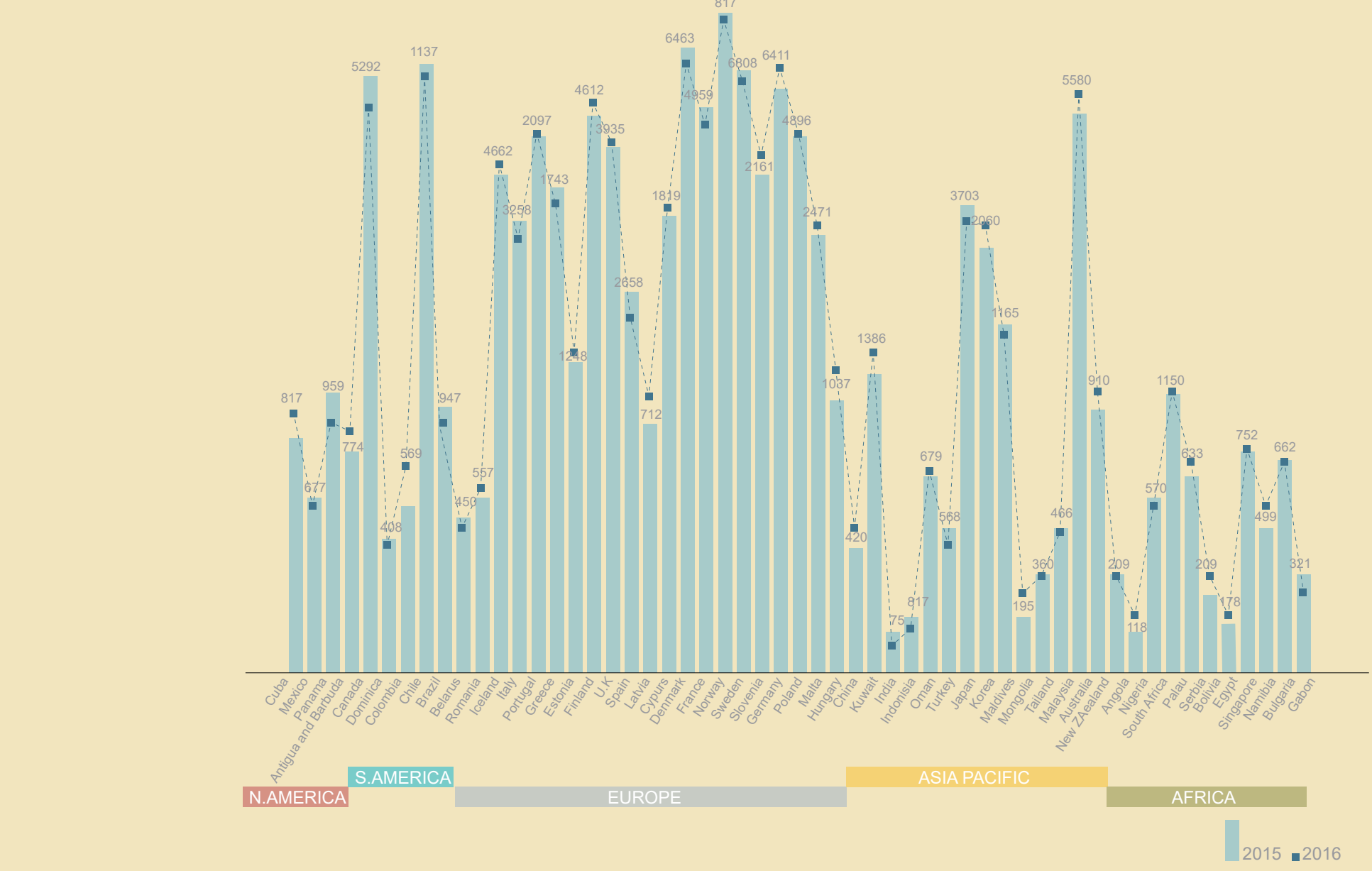


**B207**

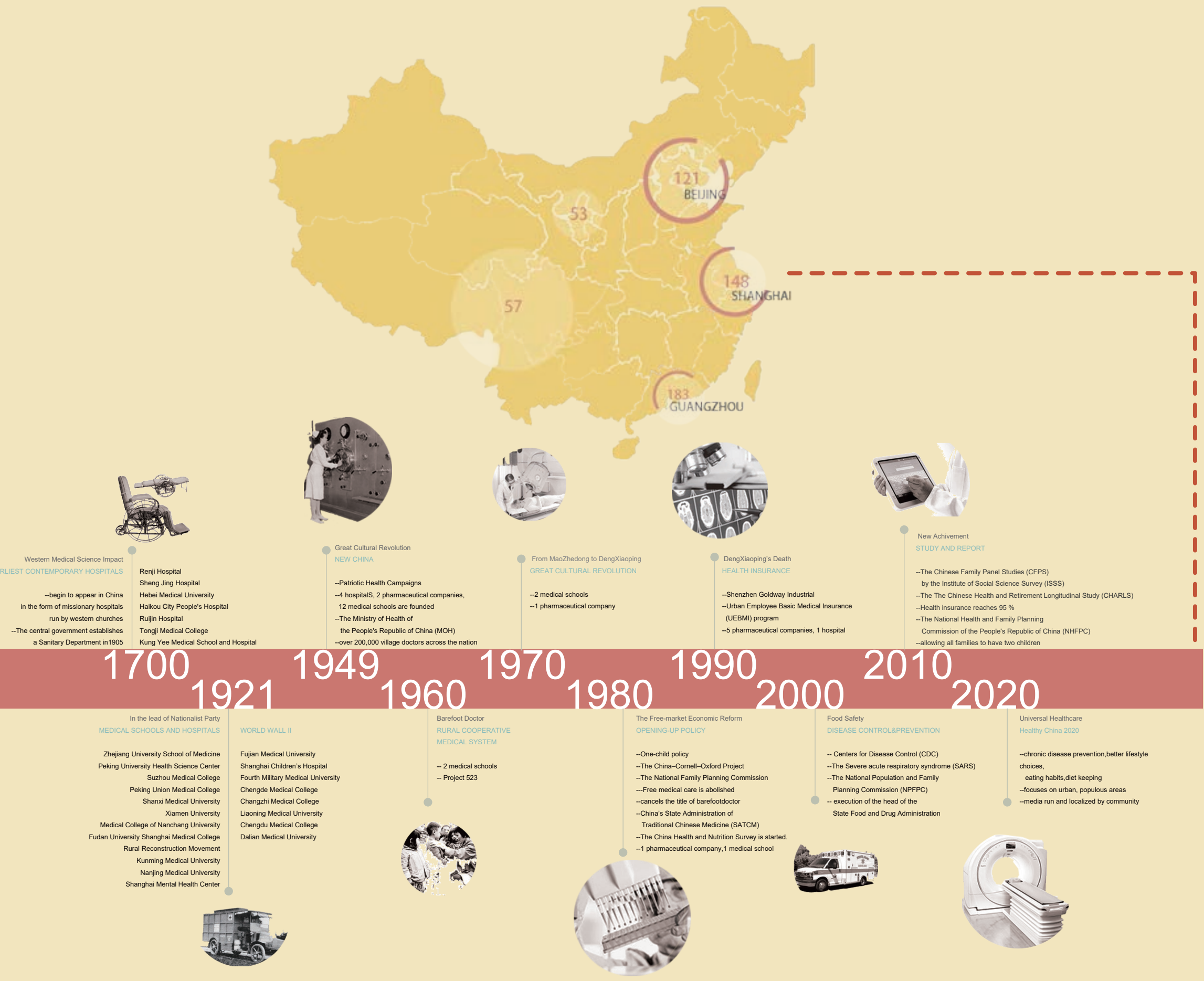


PRE-PHASE INVENTORY & ANALYSIS

GLOBAL HEALTH EXPENDITURE PER CATICATA (CURRENT US\$)

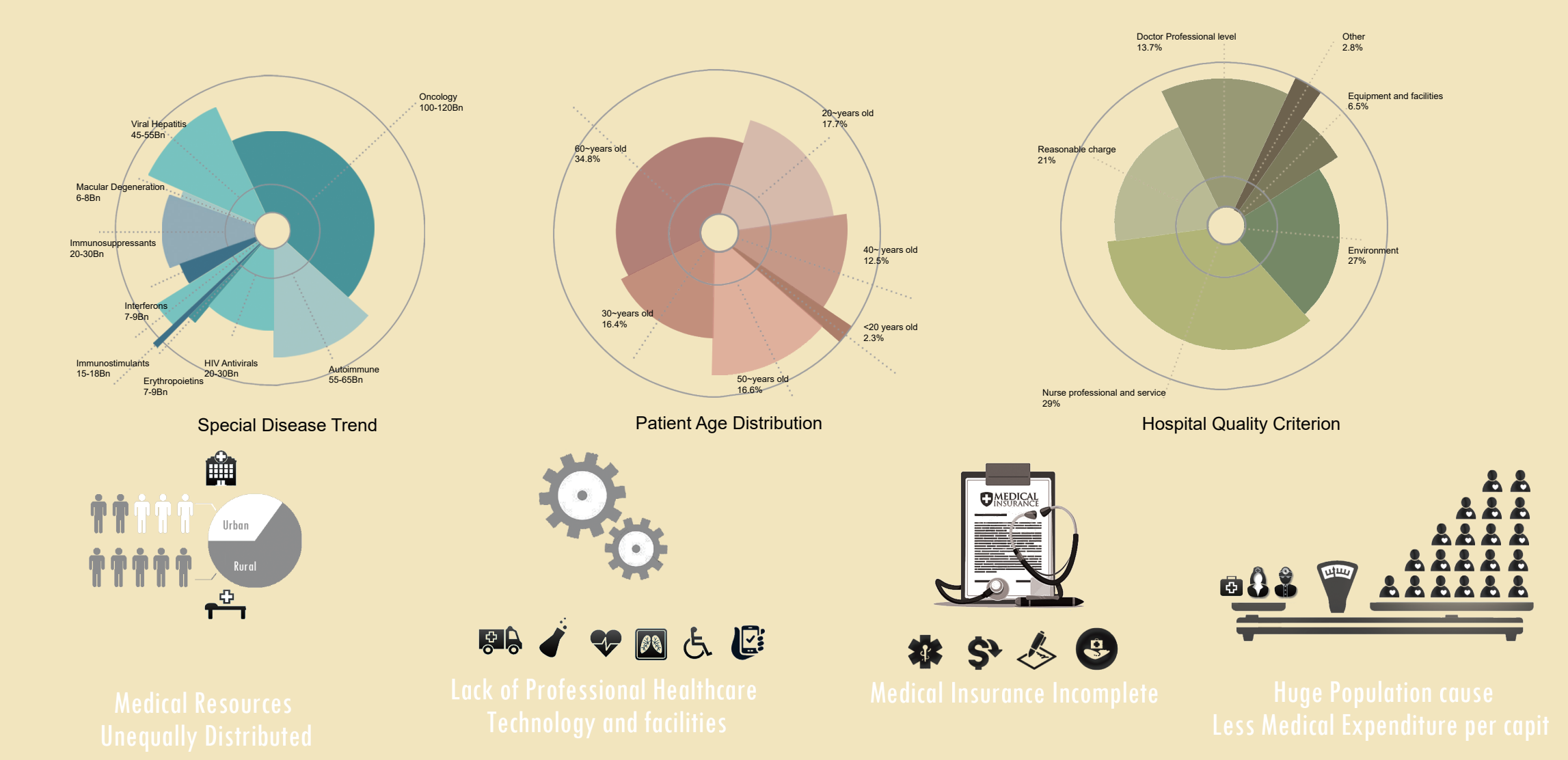


CHINA PROFESSIONAL MEDICAL LEVEL ANALYSIS

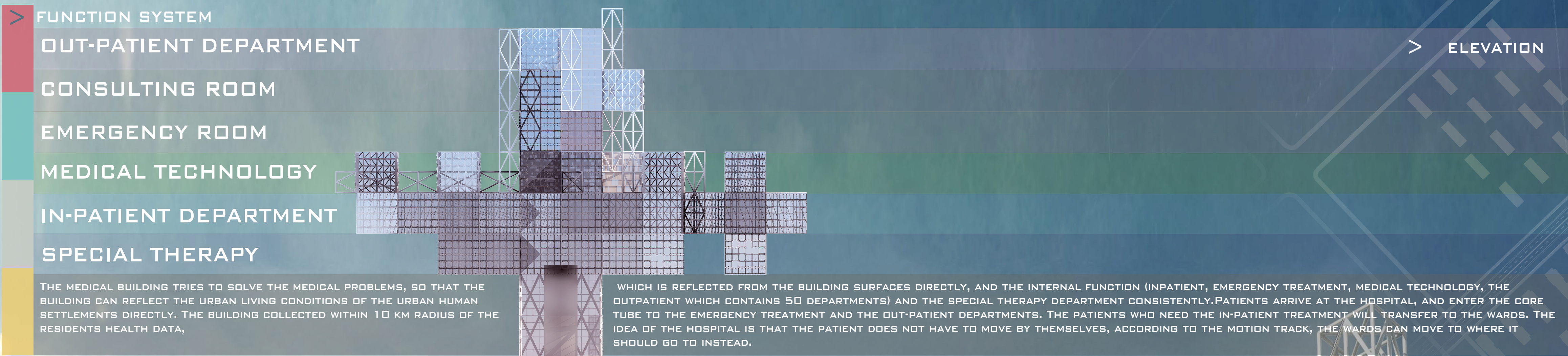


CHINA HEALTHCARE SYSTEM DEVELOPMENT TIMELINE

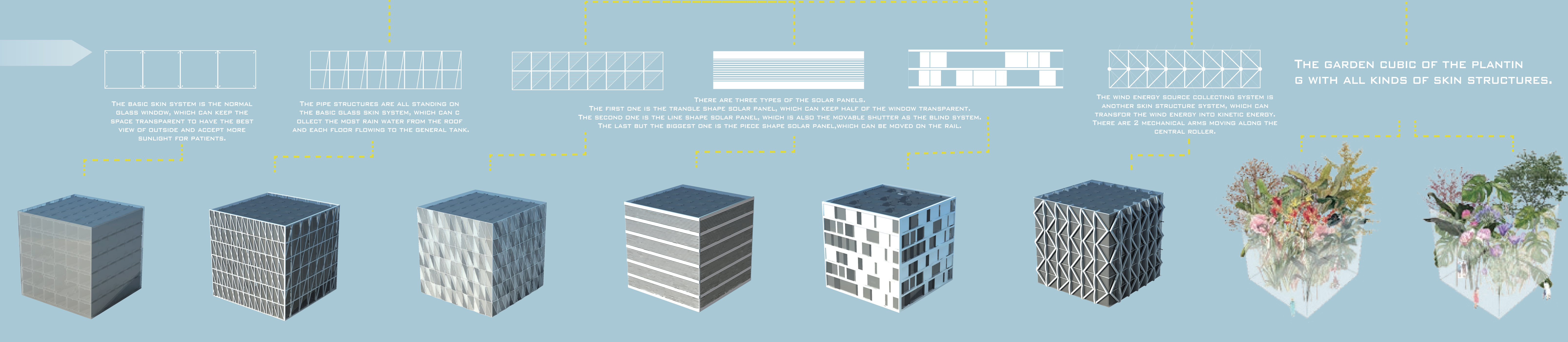
CHINA CURRENT MEDICAL PROBLEMS



ARCHITECTURE SKIN AND FUNCTION SYSTEM ANALYSIS



SKIN SYSTEM

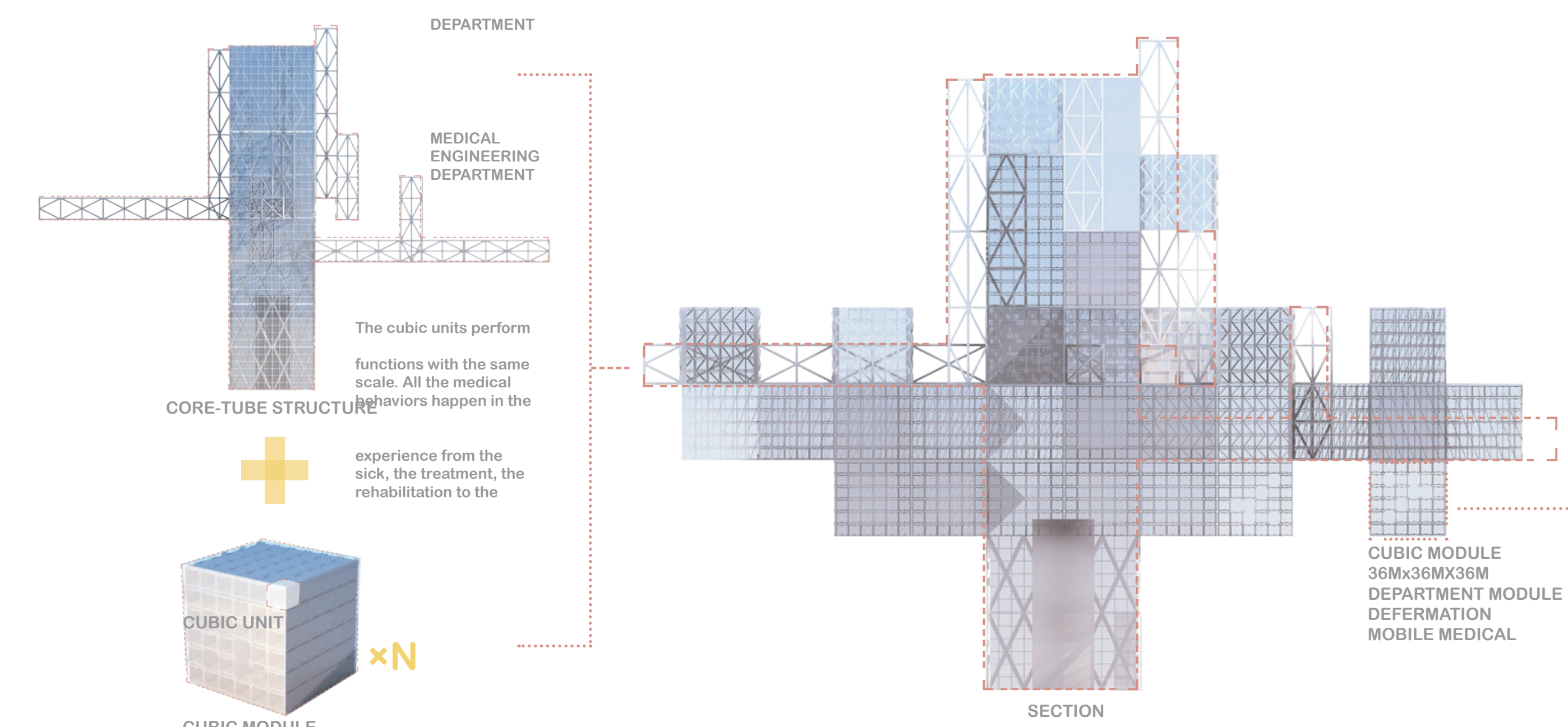


CUBIC - PITAL



# UNIT STRUCTURE & DETAILS

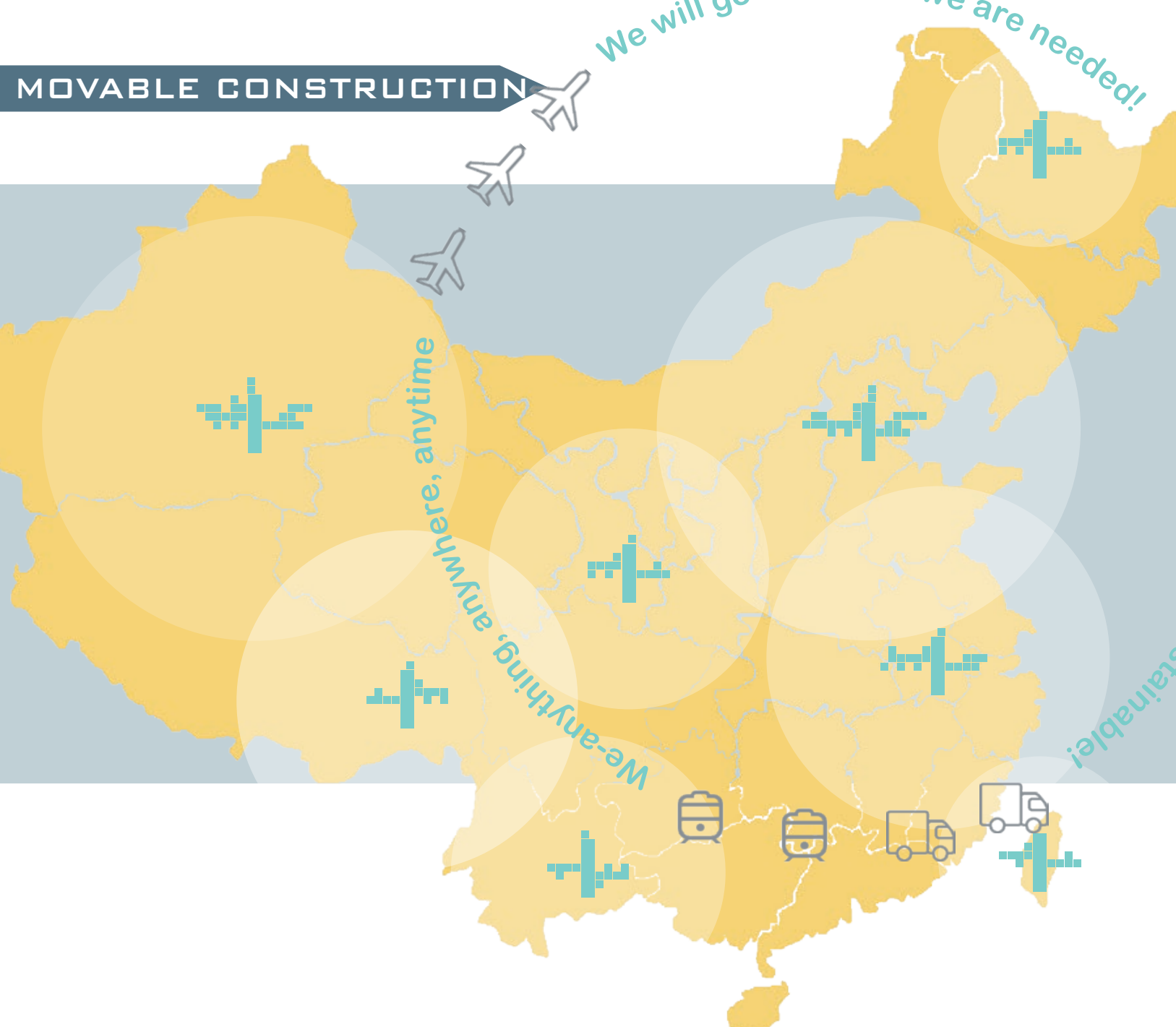
## STRUCTURE ANALYSIS



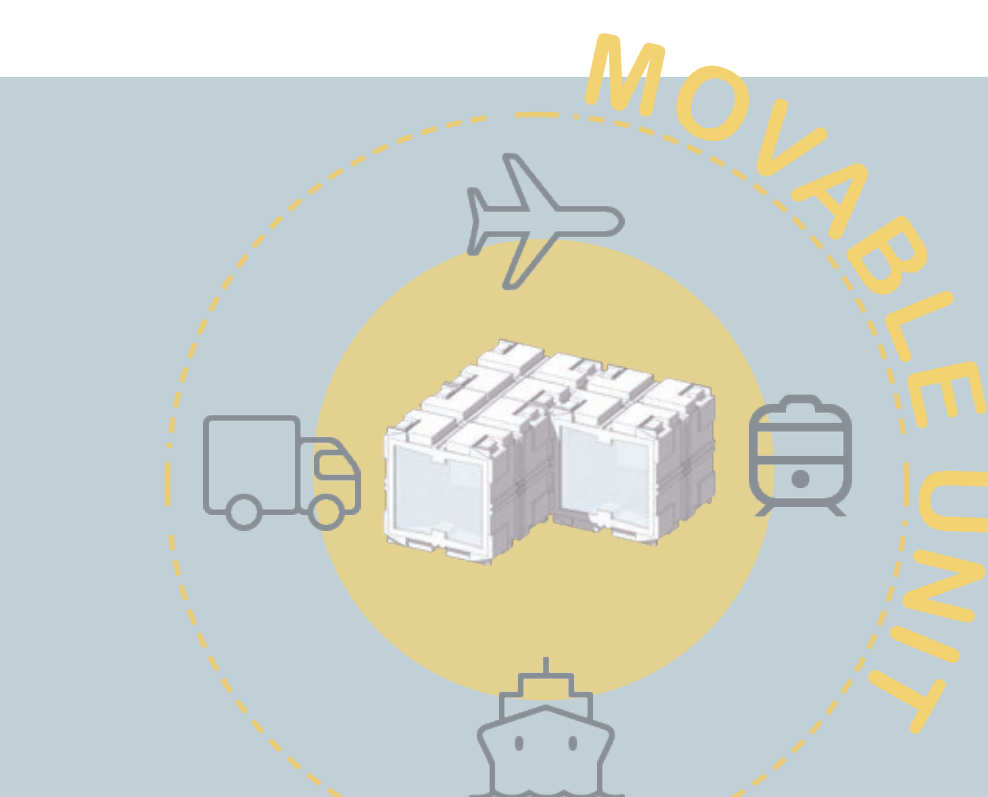
--DIVERSITY--  
--TRANSFORMABLE--  
--ADJUSTABLE--

The Architecture is integrated by core-tube structure and multiple functional cubic module. Based on the different requirements, the small medical cubic module could move on the track in and among the large assembled bodies to form the body of the independent department. The whole constructure is diversity, transformable and adjustable.

## MOVABLE CONSTRUCTION



## MOVABLE UNIT



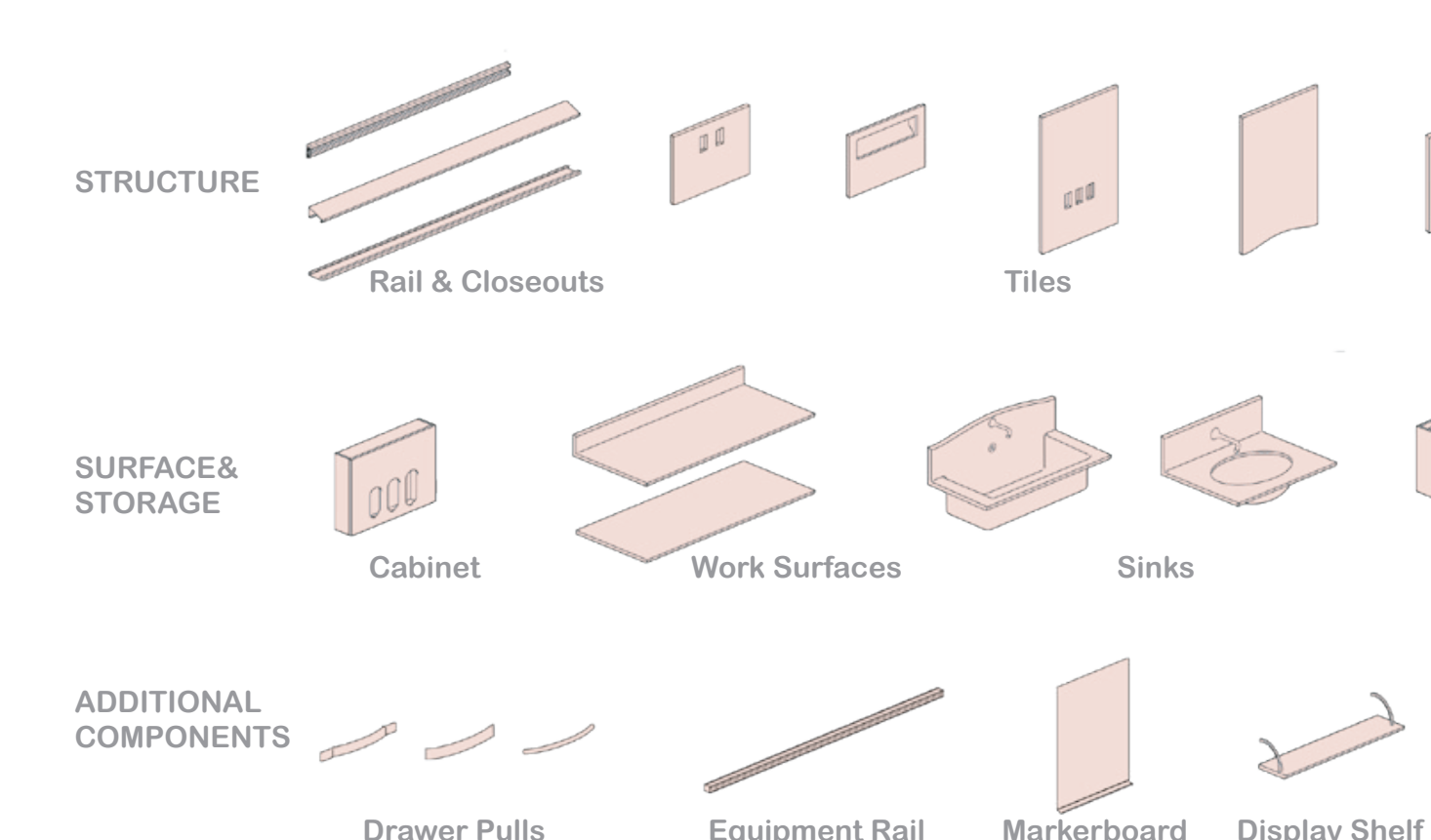
According to the medical requirements. The cubic units can be delivered through airplane, ship, train and vehicle to anywhere by anytime. The hospital can be reconstructed by these units, which is convenient and sustainable.

## INTERIOR DESIGN AND THE COMBINATION FURNITURE

Inspired by Compass System, the medical furniture is composed of rails, stiles, and tiles. The rails attach to the architectural wall, the stiles then attach to the rails, and finally the tiles attach to the stiles. There are both seated and stand-up height work surfaces and sink modules. A rotating surface extends from the wall and serves as a table or extra work surface. Storage components include a wardrobe, drawers, storage, and glove and paper towel cabinets. Additional components include a linen cart, markerboard, and display shelf. Based on the different types of patients and special requirements, these furnitures can be disassembled and reconstructed sustainably.

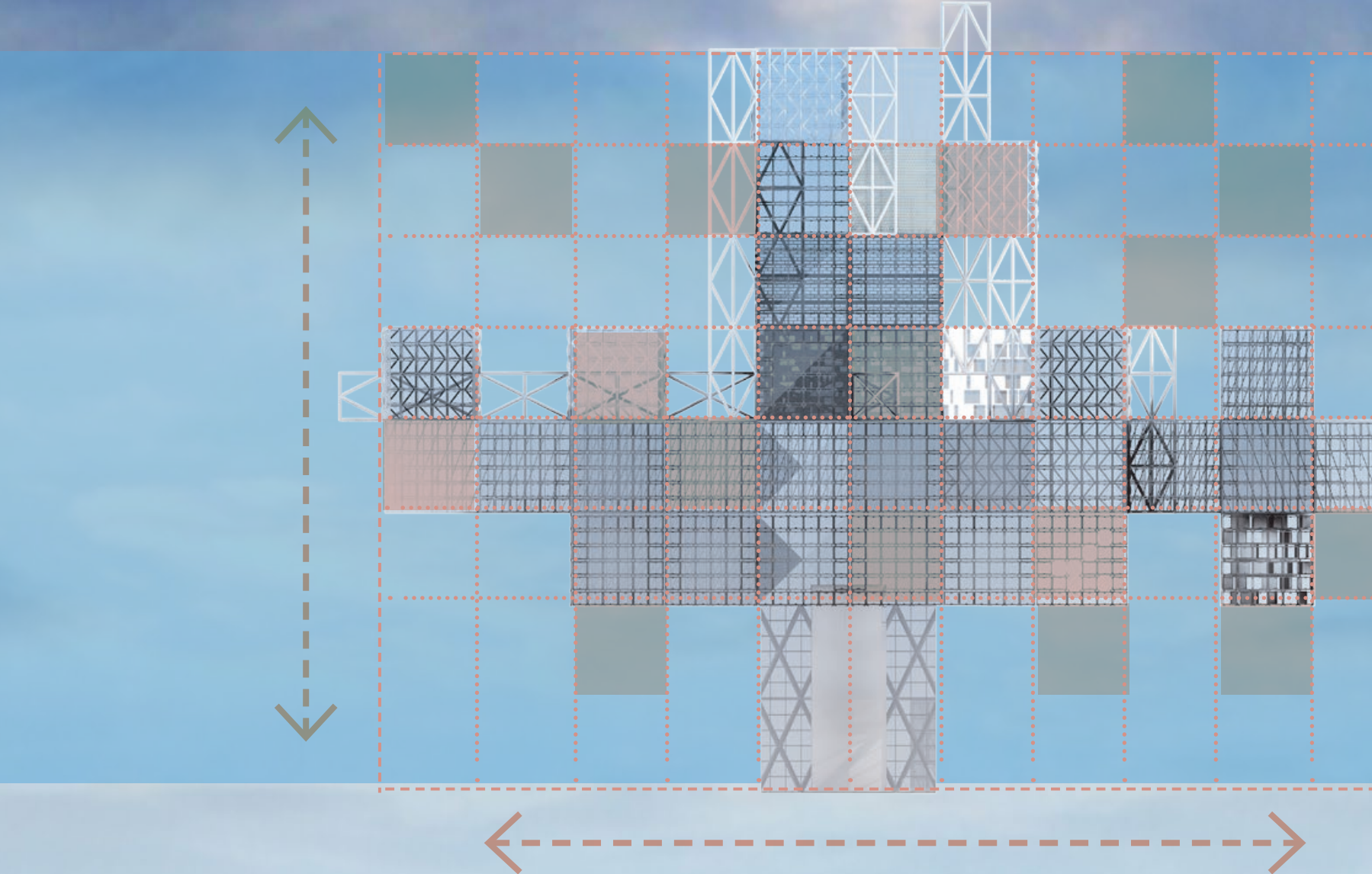


## INTERIOR DESIGN AND THE COMBINATION FURNITURE



# SMART HOSPITAL

## WORKING MECHANISM



## BIG DATA

in-patient department and special therapy. Based on the BIG DATA accounting and analysis, the cubic module can move to the appointed floor, where the patients requires more rooms.

OUT-PATIENT DEPARTMENT

CONSULTING ROOM

EMERGENCY ROOM

MEDICAL TECHNOLOGY

IN-PATIENT DEPARTMENT

SPECIAL THERAPY

## ONLINE SYSTEM

