

**FALL 2021 "ARCHITECTURE FOR HEALTH"
VISITING LECTURE SERIES**

**IT WILL TAKE COORDINATED TEAMS TO DESIGN, BUILD, &
OPERATE HEALTH & HOSPITAL FACILITIES FOR THE FUTURE**



**CENTER FOR HEALTH
SYSTEMS & DESIGN**
TEXAS A&M UNIVERSITY

PATRONS, DONORS, & SPONSORS



Craig Beale,

FAIA, FACHA, LEED AP, is a principal (Ret) at Knox Advisors and donor of the Craige & Julie Beale Endowed Professor of Health Facilities Design and SHEA, the Student Health Environments Association. He is also an outstanding alumnus of the College of Architecture.



Ronald L. Skaggs,

FAIA, FACHA, FHF, LEED AP, Chairman Emeritus, HKS Inc., Adjunct Professor of Architecture, Texas A&M University. Donor of the Ronald L. and Sondra Skaggs Endowed Professor in Health Facilities Design and The Skaggs-Sprague Endowed Chair in Health Facilities Design. He is also an outstanding alumnus of the College of Architecture.



Joseph G. Sprague,

FAIA, FACHA, FHF, Principal and Senior Vice President (Ret), HKS Inc., President Facilities Guidelines Institute; Pas President of the ACHA - American College of Healthcare Architects. Donor of the Skaggs-Sprague Endowed Chair in Health Facilities Design. He is also an outstanding alumnus of the College of Architecture.

ADVISORS/ACKNOWLEDGMENTS

Texas A&M University

- Health Science Center
- College of Medicine
- School of Public Health
- College of Veterinary & Biomedical Sciences
- College of Architecture
- CHSD - Center for Health Systems & Design
- HIAC - Health Industry Advisory Council

UIA-PHG - International Union of Architects Public Health Group



IT WILL TAKE COORDINATED TEAMS TO DESIGN, BUILD, & OPERATE HEALTH & HOSPITAL FACILITIES FOR THE FUTURE

FRIDAYS 12:40 PM - 1:30 PM CENTRAL TIME

KAMU TV

Moore Communications Center
900 Houston St
Texas A&M University Main Campus
College Station, TX 77843

The series will appeal to the general public, health consultants, nurses, physicians, allied health professionals, landscape architects, architects, mechanical, structural, and electrical engineers, interior designers, construction firms, health care administrators, facilities management, hospital engineers, materials management, and other related disciplines.

REGISTRATION INSTRUCTIONS & REQUIREMENTS:

Texas A&M University Students

Including School of Public Health

Undergraduate Students: ARCH 481, 1 Credit Hour | Section 500

Graduate Students: ARCH 681, 1 Credit Hour | Section 601

Texas A&M University

College of Medicine

3rd & 4th Year Students: Student Initiated Elective, 1 Credit Hour

Requirements:

1 page of typewritten notes of each week's lecture due the following Friday
Students must attend each lecture in person

PRACTITIONERS & PROFESSIONALS:

For those who are not students and are not registered in ARCH 481 or ARCH 681 that would like to join us for the lecture series, you are welcome to join via Zoom on Fridays at 12:30 PM Central Time.

Join Zoom: [https://tamu.zoom.us/j/94010783106?](https://tamu.zoom.us/j/94010783106?pwd=aW1YUWdoK281YU9QcHpQUIVOUDRXUT09)

[pwd=aW1YUWdoK281YU9QcHpQUIVOUDRXUT09](https://tamu.zoom.us/j/94010783106?pwd=aW1YUWdoK281YU9QcHpQUIVOUDRXUT09)

Meeting ID: 940 1078 3106 | **Passcode:** 698562

CONTINUING EDUCATION CREDIT TO BE OFFERED: AIA- AMERICAN INSTITUTE OF ARCHITECTS WITH HEALTH, SAFETY, & WELLNESS CREDIT, ASLA - AMERICAN SOCIETY OF LANDSCAPE ARCHITECTS WITH HEALTH, SAFETY, & WELLNESS CREDIT, APA - AMERICAN PLANNING ASSOCIATION

FALL 2021 TAMU Academic Calendar

FRIDAY, SEPTEMBER 3RD
12:40 PM - 1:30 PM

KEYNOTE SPEAKER



Dr. Jorge Vanegas
Dean, College of Architecture

INTRODUCED BY



A. Ray Pentecost III
DrPH, FAIA, FACHA, LEED AP
Ronald L. Skaggs FAIA and Joseph G. Sprague FAIA
Chair of Health Facilities Design
Director, CHSD
College of Architecture,
2020-2023 Director, UIA-PHG

FRIDAY, SEPTEMBER 10TH

12:40 PM - 1:30 PM:

**"WELCOME, INTRODUCTIONS OF STUDENTS,
FACULTY, ADVISORS, & VISITORS"**

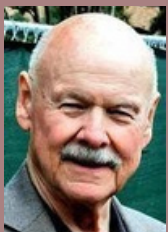


Ronald L. Skaggs,
FAIA, FACHA, FHFI, LEED
AP, Chairman Emeritus,
HKS Inc.



Joseph G. Sprague,
FAIA, FACHA, FHFI, Senior
Vice President Emeritus,
HKS Inc.

"OVERVIEW OF SPEAKERS & OBJECTIVES OF COURSE"



George J. Mann, AIA
The Ronald L. Skaggs FAIA
Endowed Professor of
Health Facilities Design,
Lecture Series Coordinator



Zhipeng Lu, Ph.D.
Associate Director, CHSD -
Center for Health Systems
& Design



A. Ray Pentecost III, DrPH,
FAIA, FACHA, LEED AP
Ronald L. Skaggs FAIA and
Joseph G. Sprague FAIA Chair
of Health Facilities Design
Director, CHSD
College of Architecture,
2020-2023 Director, UIA-PHG



Gregory A. Luhan,
Ph.D., FAIA
The Ward V. Wells Endowed
Professor of Architecture
Department Head of
Architecture



Harold Adams
FAIA, RIBA, JIA
Chairman Emeritus
RTKL



D. Kirk Hamilton, Ph.D.
FAIA, FACHA, FCCM, EDAC
Julie & Craig Beale Endowed
Professor of Health Facility Design
Founding Co-Editor, Health
Environments Research & Design



Jay Maddock, Ph.D.
School of Public Health



William (Bill) R. Eide,
Architect Emeritus
CHSD, Professional Fellow,
Visiting Research Scholar



Zachary Rowley,
Master of Architecture
Candidate,
President of SHEA Student
Health Environments
Association



Cynthia Lockledge,
Administrative Coordinator
Center for Health Systems
& Design



Chanam Lee, Ph.D.
Professor - Landscape
Architecture & Urban
Planning



Galen Newman, Ph.D.
Interim Head, Dept. of
Landscape Architecture &
Urban Planning



Patrick C. Suermann,
Ph.D., P.E., LEED AP
Department Head, Associate Professor
Charles Dewey McMullan Chair in
Construction Science
Dept. of Construction Science



Hernan Guerrero Santos
Industry Relations
Coordinator, Senior Lecturer
Dept. of Construction Science
- Administration



Jonathan Houston
Senior Lecturer,
Dept. of construction
science

FRIDAY, SEPTEMBER 17TH

12:40 PM - 1:30 PM:

**"DESIGN, DELIVERY, & TRANSITION TO OPERATIONS OF COMPLEX
HEALTHCARE EXPANSION PROJECTS DURING A PANDEMIC - WITHOUT
SACRIFICING PROGRAM OR LIFE CYCLE DECISION BEST PRACTICES"**



Antonio Suárez

MBA, CHFM, FASHE
2021 President of ASHE - American
Society of Healthcare Engineering
Director of Facilities, Texas Health
Arlington Memorial Hospital
Arlington, Texas



Michael A. Hatton

MBA, RPA, SMA, FASHE, CHFM
ASHE Region 7 Board Member
Vice President, Facilities Engineering
& Construction,
Memorial Hermann Health System

INTRODUCED BY



Joseph G. Sprague

FAIA, FACHA, FHFI
Senior Vice President Emeritus, HKS
Architects

FRIDAY, SEPTEMBER 24TH

12:40 PM - 1:30 PM:

**"EXPERIENCE WORKING ACROSS TWO OFFICES FOR A COMPLEX,
MULTI-PHASED EXPANSION FOR RENOWN HEALTH"**

Perkins & Will

Dallas, Atlanta, Austin, Boston, Charlotte, Chicago, Durham, Houston, Los Angeles, Miami, Minneapolis, New York, San Francisco, Seattle, Calgary, Denmark, London, Monterrey, Ottawa, Sao Paulo, Shanghai, Toronto, Vancouver

Renown Health (formerly **Washoe Health System**) is the largest locally owned not-for-profit healthcare network in Northern Nevada. It has more than 6,500 employees system-wide and is one of Northern Nevada's largest employers.



Ashley Dias

Director of Healthcare
Strategies, Associate Principal
Perkins + Will
Dallas, TX



Thomas Newsom

AIA, CDT, LEED AP
Senior Project Manager,
Associate Principal
Perkins + Will
Dallas, TX

INTRODUCED BY



Jonathan Houston

Senior Lecturer,
Dept. of Construction Science

FRIDAY, OCTOBER 1ST

12:40 PM - 1:30 PM:

**"CREATING TEAMING SUCCESS FOR THE SCOTTISH RITE SPORTS
COMPLEX", FRISCO, TEXAS**

HKS, Inc.

United States | Atlanta, Miami, New York, Orlando, Richmond, Washington, D.C.,
Chicago, Dallas, Detroit, Ft. Worth, Houston, Denver, Los Angeles, Phoenix, Salt Lake
City, San Diego, San Francisco

Asia & Pacific | New Delhi, Shanghai, Singapore, Tokyo

Europe, The Middle East, & North Africa | Dubai, London

Latin America | Mexico City



Rachel Knox

AIA, ACHA, EDAC,
LSSGB, LEED AP
Director of Health, Pediatric
Practice Leader
HKS



Donald E. Katz

MHA, CO, FAAOP
Vice President, Facilities
& Process Design
Scottish Rite for Children
Dallas, TX



Christian Schulke

Administrative Director
Scottish Rite for Children
Dallas, TX



Allison Tabor

Facilities Project Manager
Scottish Rite for Children
Dallas, TX

INTRODUCED BY



Tyler Chapman

Senior Project Manager
The Beck Group
Dallas, TX



Ronald L. Skaggs

FAIA, FACHA, FHFI, LEED AP
Chairman Emeritus,
HKS



Brian Briscoe

AIA, ACHA, EDAC, LEED
AP BD+C
Vice President
HKS



Jason Schroer

AIA, ACHA, LEED AP
Principal
HKS

FRIDAY, OCTOBER 8TH

12:40 PM - 1:30 PM:

**"REIMAGINING THE MULTISPECIALTY MEDICAL OFFICE BUILDING:
COLLABORATING WITH THE MULTIDISCIPLINARY TEAM FROM
CONCEPT TO CONSENSUS"**

EwingCole

Baltimore, Berwyn, Charlotte, Irvine, New York, Philadelphia, Pittsburgh, Raleigh,
San Diego



Debbie Phillips

AIA, ACHA, EDAC
Associate
EwingCole



Mary Frazier

AIA, LSSGB
Managing Principal,
New York Office
EwingCole



Alice Gittler

MS, LSSGB, EDAC
Director, Health Care
Design & Research
EwingCole



Rich Steimel

Principal in Charge, Healthcare
Lendlease Corporation



Jonathan B. Cogswell

Assistant Vice President, Facilities
Services & Engineering
Northwell Health

INTRODUCED BY



Zhipeng Lu, Ph.D.

Associate Director, CHSD
Center for Health Systems & Design

FRIDAY, OCTOBER 15TH

12:40 PM - 1:30 PM:

**"FACILITATING THE FLOW: HOW TO NAVIGATE THE SUBTLETIES FOR
A SUCCESSFUL COLLABORATIVE PROCESS"**



Anthony Haas

FAIA, FACHA
Regional Health Director, Senior Principal
EYP
Houston



Jessica Petro

PLA, ASLA
Landscape Architect, Lead Designer
EYP
Houston

INTRODUCED BY



D. Kirk Hamilton

Ph.D., FAIA, FACHA, FCCM, EDAC
Julie & Craig Beale Endowed Professor of Health Facility
Design
Founding Co-Editor, *Health Environments Research & Design*

FRIDAY, OCTOBER 22ND

12:40 PM - 1:30 PM:

**"EMPATHETIC DESIGN: INTEGRATED & COLLABORATIVE DESIGN FOR
HEALTHY PEOPLE & ENVIRONMENTS"**

PALOMAR MEDICAL CENTER, ESCONDIDO, CALIFORNIA

SOUTHWEST FISHERIES SCIENCE CENTER, LA JOLLA, CALIFORNIA

INTRODUCED BY



Bruce Dvorak

ASLA, PLA
Associate Professor, Master of
Landscape Architecture Program
Coordinator, Registered Landscape
Architect



Chanam Lee

Professor,
Dept. of Landscape
Architecture & Urban
Planning



Jay Maddock, Ph.D.

Professor, Environmental &
Occupational Health
Interim Director, Institute for Advancing
Health through Agriculture
Co-Director, Center for Health & Nature
Editor-in-Chief, *Journal of Healthy Eating
& Active Living*

FRIDAY, OCTOBER 29TH

12:40 PM - 1:30 PM:

"DEVELOPING A TRUE COLLABORATIVE TEAM APPROACH & MAINTAIN IT THROUGHOUT THE PROJECT"

HDR

United States, Canada, Australia, China, Singapore, Germany, United Kingdom, Saudi Arabia, United Arab Emirates



Crandle Davis

Health Principal
HDR



Dan Thomas

AIA, EDAC
Health Principal
HDR



Chad Anderson

AIA, LEED AP BD+C
Managing Principal
HDR



William (Bill) R. Eide

Architect Emeritus, CHSD
Professional Fellow
Visiting Research Scholar

INTRODUCED BY

FRIDAY, NOVEMBER 5TH

12:40 PM - 1:30 PM:

"A SYSTEM-WIDE APPROACH TO IMPROVING BRAND EXPERIENCE & BRAND IMAGE WHILE MAINTAINING CONSISTENCY ACROSS MULTIPLE PROJECTS"

CallisonRTKL

Baltimore, Chicago, Dallas, Detroit, Houston, Abu Dhabi, Berlin, Dubai



Larry McKillop

Senior Associate Vice President
Project Manager
CallisonRTKL



Michael St. Clair

AIA
Senior Associate Vice President
Senior Planner
CallisonRTKL



Patrick M. Casey

AIA
Vice President
Facilities Operations & Planning
University of Miami Health System

INTRODUCED BY



Harold Adams

FAIA, RIBA, JIA
Chairman Emeritus
RTKL

WEDNESDAY, NOVEMBER 10TH

2:30 PM - 3:30 PM:

**"COLLABORATING TO DESIGN & BUILD A NEW HOSPITAL FOR
BAPTIST HEALTH CARE BRENT LANE CAMPUS," PENSACOLA, FLORIDA**

Gresham Smith, Architects

Atlanta, Baton Rouge, Birmingham, Charlotte, Chattanooga, Chicago, Cincinnati,
Columbus, Dallas, Ft. Lauderdale, Jackson, Jacksonville, Knoxville, Lexington, Louisville,
Memphis, Miami, Nashville, Richmond, Tallahassee, Tampa

Brasfield & Gorrie, LLC, General Contractors

Birmingham (Corporate HQ), Atlanta, Charlotte, Columbus, Dallas, Greenville, huntsville,
Jackson, Jacksonville, Nashville, Orlando, Raleigh



Corie Baker

LEED AP BD+C, Fitwel
Ambassador, WELL AP EDAC,
NCARB
Project Manager/Architect
Gresham Smith
Jacksonville



Carolyn Fleetwood Blake

IIDA, LEED AP, EDAC
Senior Interior Designer
Gresham Smith
Jacksonville



Trey Rudolph, LP

Senior Landscape Architect
Gresham Smith
Nashville

INTRODUCED BY



Lee Thompson

Project Director
Brasfield & Gorrie, LLC,
General Contractors
Birmingham



Eric Gunn

Chief Preconstruction Manager
Brasfield & Gorrie, LLC,
General Contractors



Zhipeng Lu, Ph.D.

Associate Director, CHSD
Center for Health Systems & Design

FRIDAY, NOVEMBER 12TH

12:40 PM - 1:30 PM:

**"HEALTHCARE DESIGN - A WORLD OF OPPORTUNITIES FOR A
COMPLEX TYPOLOGY"**

Page/

Washington, D.C., Austin, Chandler, Arizona, Dallas, Denver, Houston, San Francisco,
Ciudad Mexico, Dubai

INTRODUCED BY



Mattia Flabiano

AIA, ACHA
President/Senior Principal

Page/

Dallas



Robert F. Doane

AIA, ACHA
Principal

Page/

Dallas



Professor Xuemei Zhu,

Ph.D.

James M. Singleton IV '66, FAIA
Education Architecture Professorship

FRIDAY, NOVEMBER 19TH

12:40 PM - 1:30 PM:

**"HEALTHCARE FACILITY DRIVERS - PLANNING TEAM
COORDINATION"**

INTRODUCED BY



Lawrence Lammers

AIA, NCARB, FAAHC
Founding Principal

Lammers + Associate

Reston, Virginia



Ronald L. Skaggs

FAIA, FACHA, FHFI, LEED AP
Chairman Emeritus

HKS Architects

ADDITIONAL ACKNOWLEDGEMENTS:



Cynthia Lockledge

Administrative Coordinator
Center for Health Systems & Design
Texas A&M University

HIAC MEMBER FIRMS:

B A L L I N G E R

Ballinger

CALLISONRTKL™

CallisonRTKL



Earl Swensson Associates, Inc.



EYP



Gresham Smith



HDR, Inc.



HKS Architects



The INNOVA Group

MarmonMok
ARCHITECTURE

Marmon Mok Architecture



Page

**PERKINS —
EASTMAN**

Perkins-Eastman

Perkins&Will

Perkins&Will

**SHEPLEY
BULFINCH**

Shepley Bulfinch

SHEA - STUDENT HEALTH ENVIRONMENTS ASSOCIATION

STUDENT OFFICERS



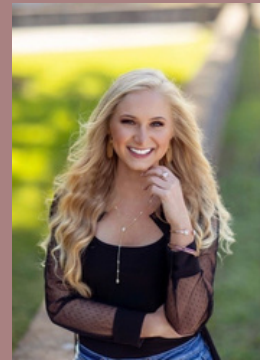
Zachary Rowley
President & Treasurer
zrowley1@tamu.edu



Sanchali Dutta
Graduate Representative &
Director of Communications
sanchalidutta@tamu.edu



David Wang
Graphic Design &
Director of Marketing
davidwang01@tamu.edu



Madison R. Lesmeister
Undergraduate Representative
& Director of Marketing
madison.r.lesmeister@tamu.edu