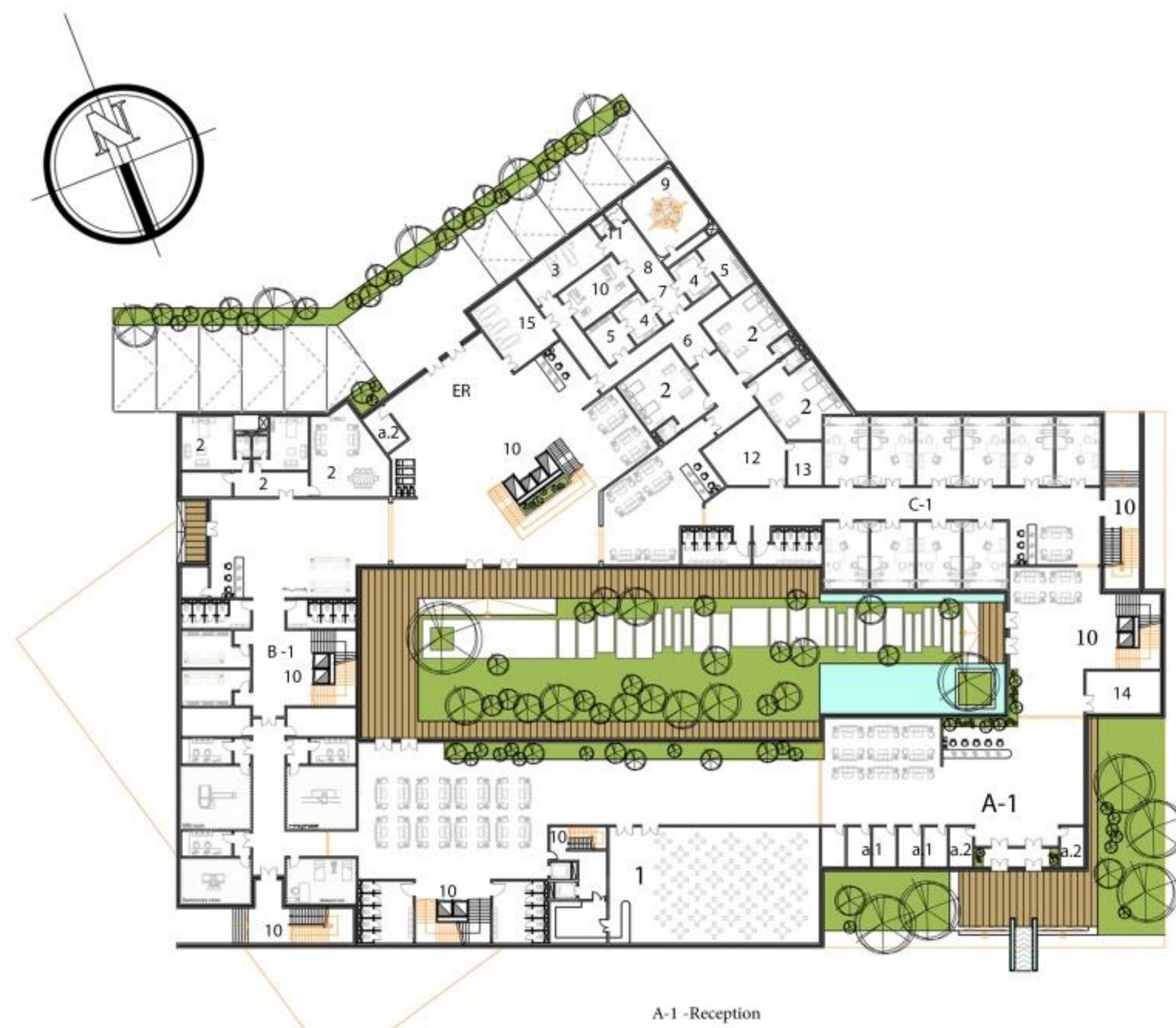


**B202**



- 1-F Operations unite
- 2-F -Postpartum observation
- 3-F- Nursery
- A-F-1- Giving birth
- B-F-2 -Blood laboratory
- C-F-3 -Administration
- D-F-4 -Department of shelter
- 1- Coffee shop
- 2- Sleeping doctor
- 3 -Recovery
- 4 -Hand wash
- 5 -Changing clothes
- 6 - normal passage
- 7- Sterile passage
- 8- Store materials
- 9- Operations room
- 10- Preparing patient
- 11 -blood bank
- 15 - Examination - check up

First Floor



- A-1 -Reception
- a-1 -Gifts Shop
- a-2 -security
- B-1- Radiation Unit
- C-1 -Outpatient clinics
- ER- emergency Unit
- 1 -Coffee shop
- 2- Sleeping doctor
- 3- Recovery
- 4 -Hand wash
- 5 -Changing clothes
- 6- normal passage
- 7- Sterile passage
- 8 -Store materials
- 9 -Operations room
- 10- Preparing patient
- 11- blood bank
- 12 -Pharmacy
- 13 -Pharmacy Store
- 14 -Archive and records
- 15- Examination - check up
- 16 -Stairs

Ground floor



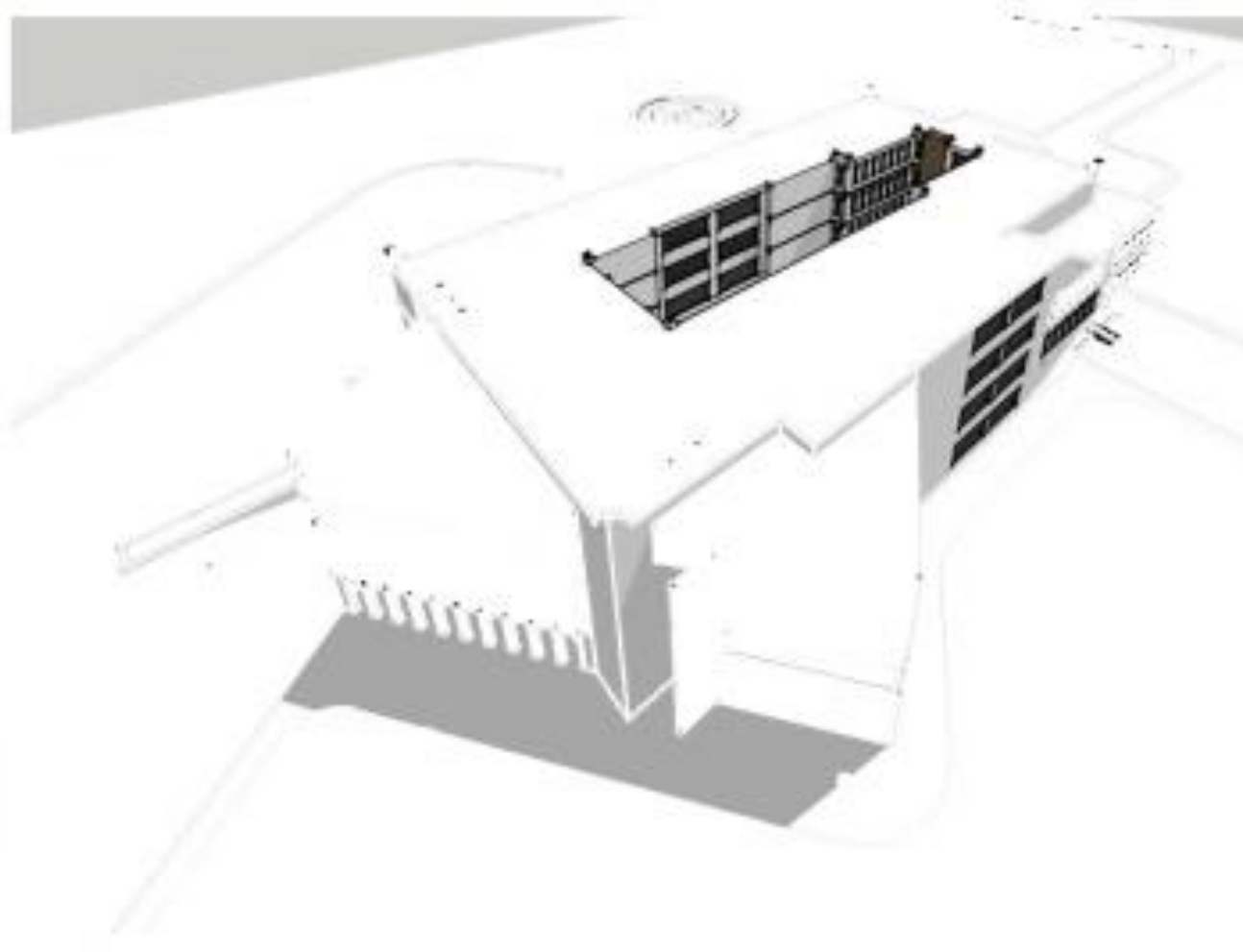
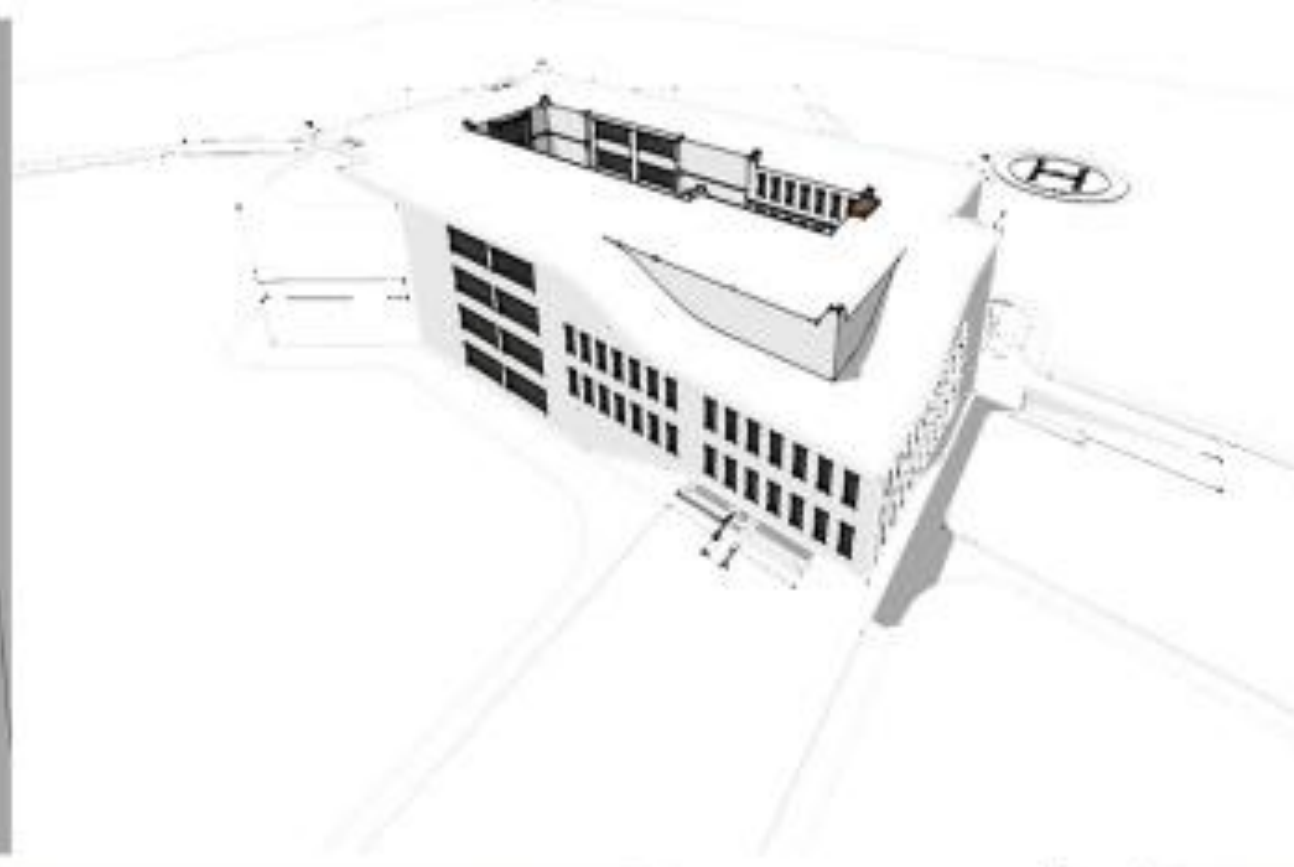
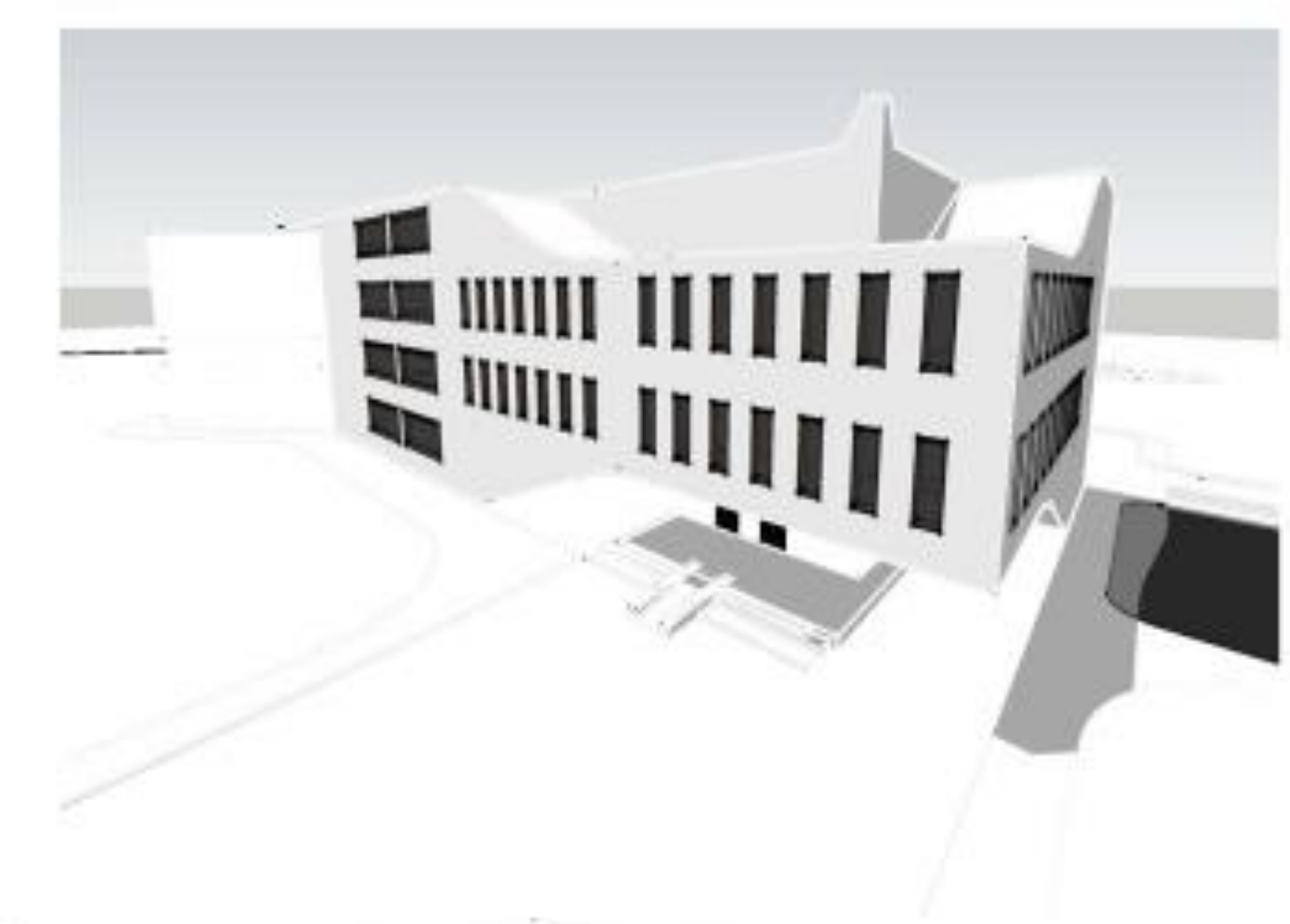
- 1Gymnasium (Belliardua - tennis ....)
- 2 Department of shelter
- 4 Garden surface
- 5 Guest library

Third Floor



- 1 Medical Administration
- 2 Department of shelter
- 3 Operations
- 4 Garden surface
- 5 Guest library

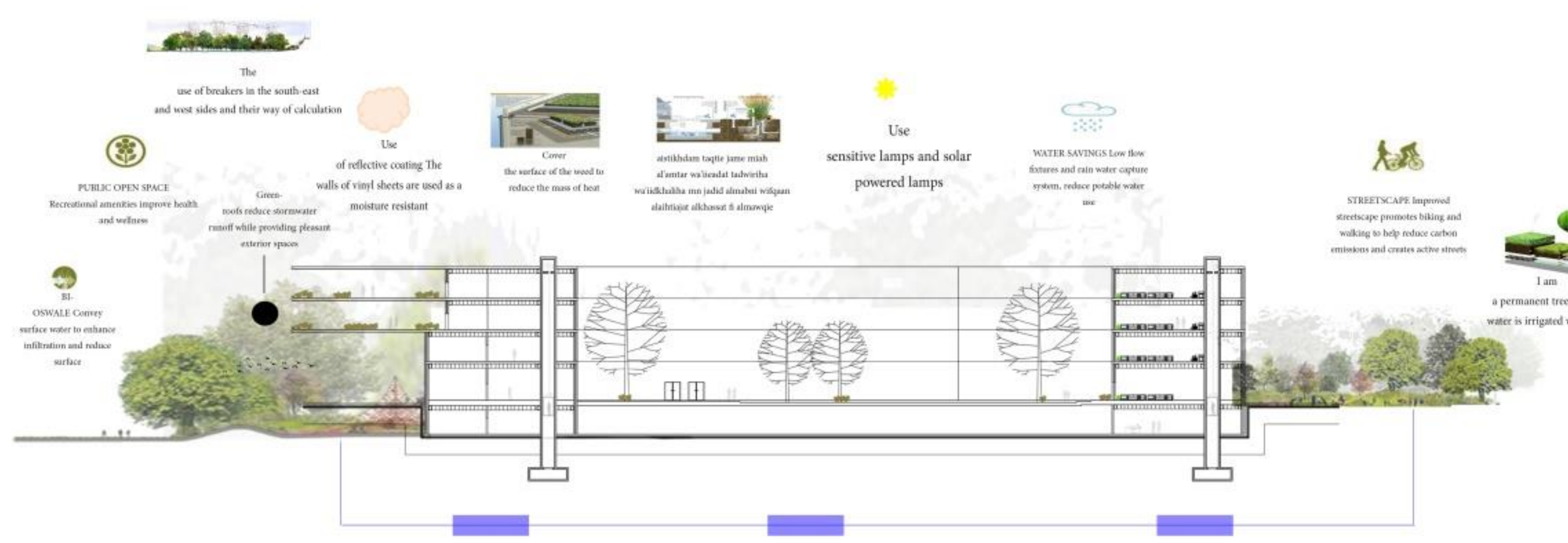
Second Floor



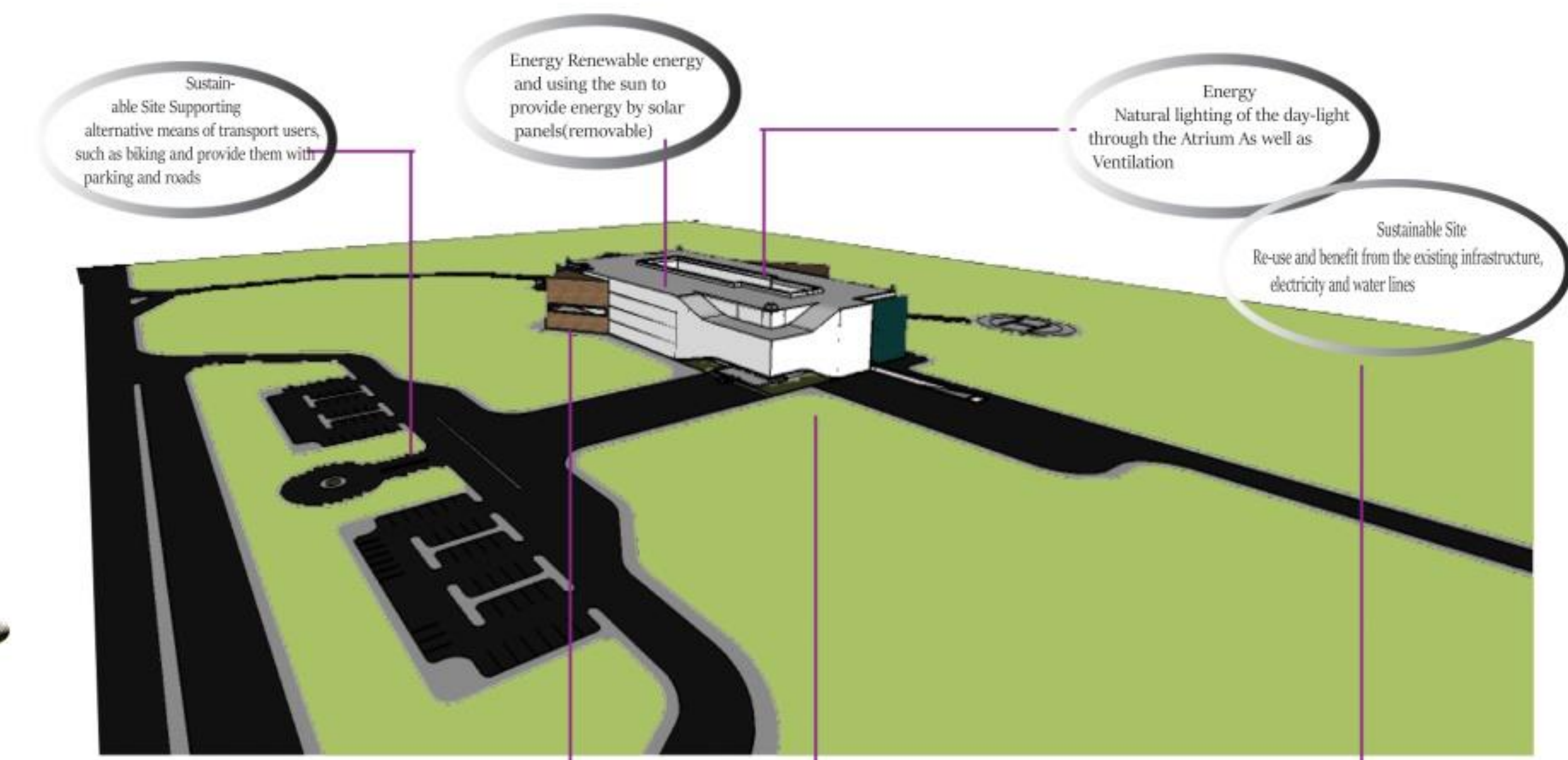
- 1 Supply of food
- 2 cafeteria
- 3 Laundry
- 4 maintenance
- 5 security
- 6 information
- 7 Store
- 8 Store
- 9 Periodic Maintenance Section
- 10 Disposal of damaged equipment
- 11 Waste
- 12 security
- 13 Forensic Office
- 14 Fridge
- 15 death office legal proceedings
- 16 Death Record Office
- 17 The morgue
- 18 store
- 19 Central sterilization
- 19-1 Store is sterile
- 19-2 Store sterilizers and equipment
- 19-3 Work space and preparation
- 19-4 Distribution and delivery
- 19-5 Sterilization vacuum
- 20 control room
- 21 medical services
- 23 Thermal Energy Center
- 24 Generators
- 25 Oxygen and gases
- 26 Parking Service
- 27 Receiving goods
- 28 Save the milk
- 29 freezing room
- 30 Save meat
- 31 Parking trolleys
- 32 Food supply



Basement Floor



section A-A



SITE SUSTANABLE

- Sustainable Site Supporting alternative means of transport users, such as hiking and provide them with parking and roads
- Energy Renewable energy and using the sun to provide energy by solar panels(removable)
- Energy Natural lighting of the day-light through the Atrium As well as Ventilation
- Sustainable Site Re-use and benefit from the existing infrastructure, electricity and water lines
- Materials and Resources The use of lightweight Material and Sustainable Glass Fiber Reinforced concrete(GRC)
- Water Efficient The use of rain plants, rainwater harvesting and purification on-site
- Water Efficient The use of rain plants, rainwater harvesting and purification on-site
- Sustainable Site Rainwater treatment from the nearest drainage point of government